

11/200 Pacific Highway Lindfield, NSW 2 1 1

Convenient Westbourne Rd access with panoramic view

Take advantage of outstanding convenience while enjoying panoramic views sweeping across to the Blue Mountains horizon in this light-drenched, renovated apartment. Near level entry and a walk to everything position give this home paramount accessibility, plus there's a handy lift to garage level. Spacious interiors sing with stylish updates while seamlessly integrating with the large sandstone terrace, ideal for entertaining.

Price:

Sold Prior To Auction



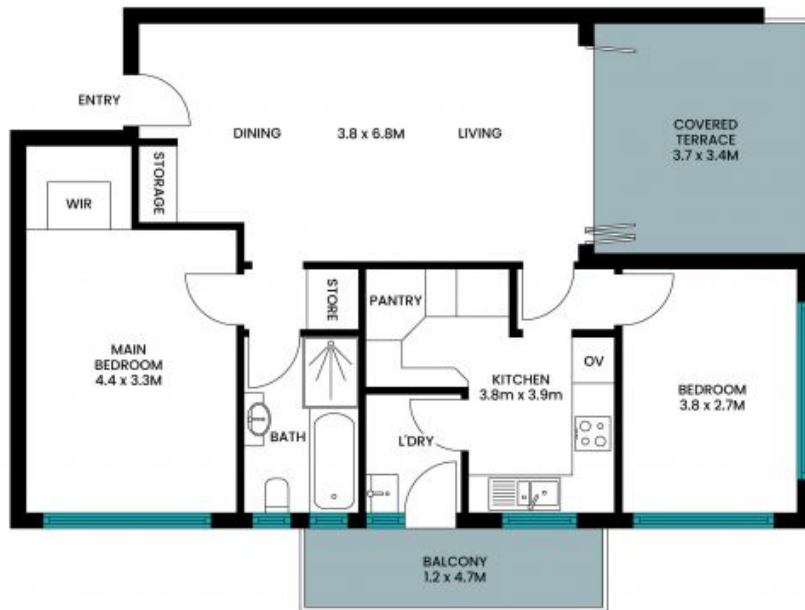
Matt Payne

0435 825 242



Ryan Woo

0410 884 680



Internal area: 76m²
Balcony area: 18m²
Garage area: 17m²
Total area: 111m²

The site plan and floor plan are not to scale; measurements are indicative and in metres. Bushes and trees are placed for illustration purposes. Plans should not be relied on. Interested parties should make and rely on their own enquiries. All other information provided has been collected from reliable sources but cannot be guaranteed for accuracy.