



507/34 Wentworth Street Glebe, NSW



Vibe on the CBD fringe

Bright, breezy and freshly minted, this studio apartment is a dream come true for market newcomers, investors and hipsters longing to be part of the vibe on the CBD fringe.

Price: Sold - Contact Agent
Council Rates: \$238.00 p/q
Water Rates: \$166.82 p/q
Strata Rates: \$1,016.61 p/q



Christian Leung

0423 555 162

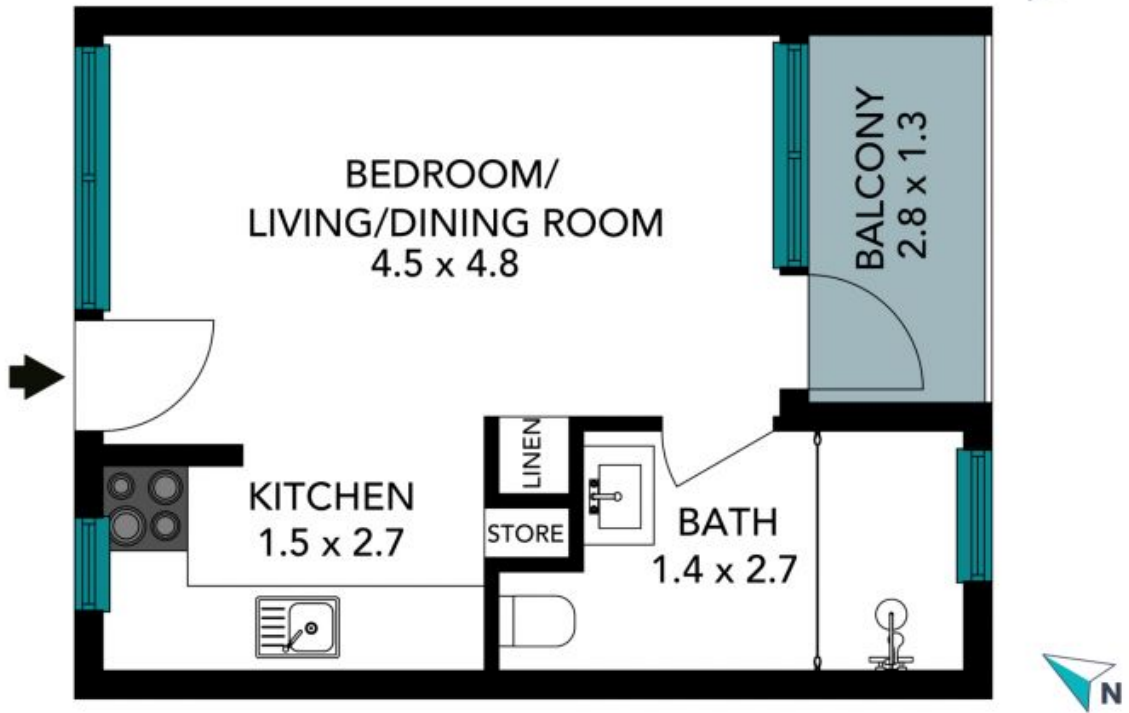


Michael Carbone

0416 280 610

507/34 Wentworth Street
Glebe

STONE



The floor plan is not to scale, measurements are indicative and in metres. Exterior elements are not in position. Plans should not be relied on, interested parties should make and rely on their own enquiries. All other information provided has been collected from reliable sources but cannot be guaranteed for accuracy.

507/34 Wentworth Street
Glebe



The floor plan is not to scale; measurements are indicative and in metres. All features included in this 3D plan are for inspiration purposes only. This is not an exact replica of the property or the position of exterior elements. Plans should not be relied on. Interested parties should make and rely on their own enquiries.