

85/7 Chapman Avenue Beecroft, NSW

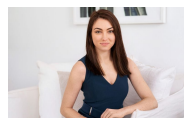


Vibrant and stylish, near-new pad in the heart of Beecroft

A sleek urban retreat enjoying private aspects and prime convenience, this light-filled apartment is fully optimised for effortless contemporary living. Set to the fifth floor of 'The Croft' ? one of Beecroft's most desirable garden complexes ? it provides a high-performance investment opportunity or a quality entree into a premium suburb with all local attractions at the door.

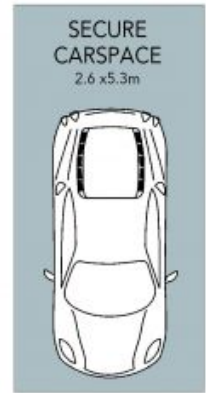
Price: Deposit Taken

Available Date: 01/04/2023



Sarah Hastings

02 8893 2218



BASEMENT

The floor plan is not to scale; measurements are indicative and in metres. Exterior elements are not in position. Plans should not be relied on. Interested parties should make and rely on their own enquiries.



85/7 Chapman Avenue, Beecroft

