

8 Hoad Place Berkeley, NSW

4 3 3

SOLD BY STONE REAL ESTATE | SARAH WARD & JAMIE PEREIRA

Price: \$877,000

Family excellence in peaceful locale



Sarah Ward

0400 439 602



Jamie Pereira

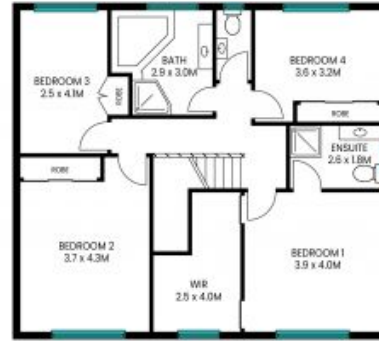
0447 379 080

8 Hooad Place, Berkeley

INT : 208m²
 EXT : 45m²
 GARAGE : 51m²



Ground Level



Upper Level



The site plan and floor plan are not to scale, measurements are indicative and in metres. Bathes and trees are placed for illustration purposes. There should not be relied on interested parties should make and rely on their own enquiries. All other information provided has been collected from reliable sources but cannot be guaranteed for accuracy.