

114/21 Grosvenor Street Neutral Bay, NSW



Modern Dual Level Apartment in Ultra Convenient Location

This dual level 2 bedroom in the "Lucca Apartments" building enjoys a fabulous location with cafes & eateries only footsteps from the front door, and within approx 5 minutes walk to City buses, supermarkets, a plethora of local shops & the Oaks Hotel.

- Pet Friendly building (subject to by-law conditions)
- 2 bedrooms - 1 upstairs, 1 downstairs
- Living room with split system aircon, flows onto large covered balcony
- Kitchen with Miele appliances, mirrored splashback & stone benchtop
- Bathroom with floor to ceiling tiles. Laundry separate to bathroom
- Features floating flooring. Video intercom. Storage cage
- Security building with lift access
- Offered with vacant possession

Approximate outgoings per quarter: Council \$290.00, Water \$156.70, Strata \$2,224.00

Disclaimer:

All information contained herein is gathered from third party sources we deem to be reliable...

Price: Contact Agent
Council Rates: \$290.00 p/q
Water Rates: \$156.70 p/q
Strata Rates: \$2,224.00 p/q



Chris Reynolds

0416 265 967

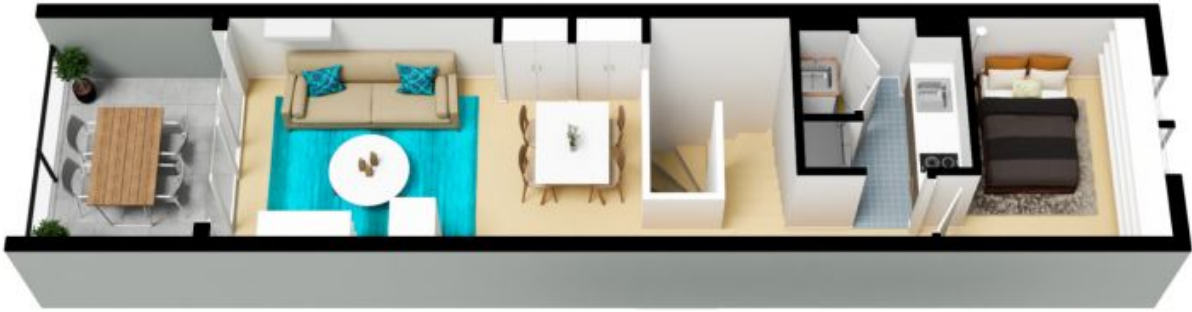


Chris Reynolds

0416 265 967

114/21 Grosvenor Street
Neutral Bay

STONE

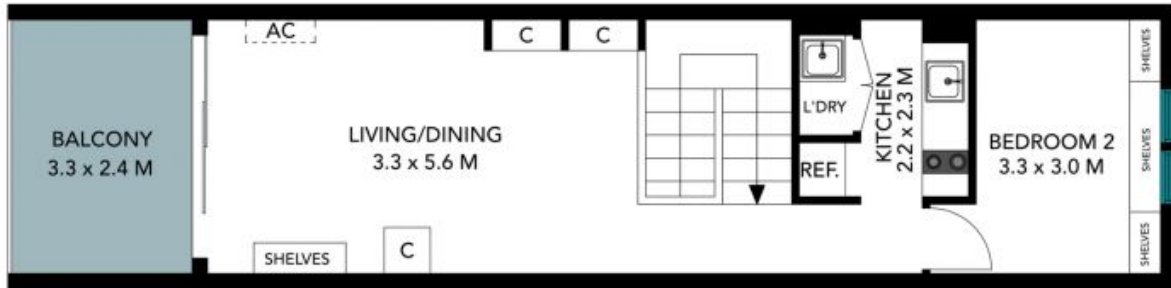


SECOND FLOOR

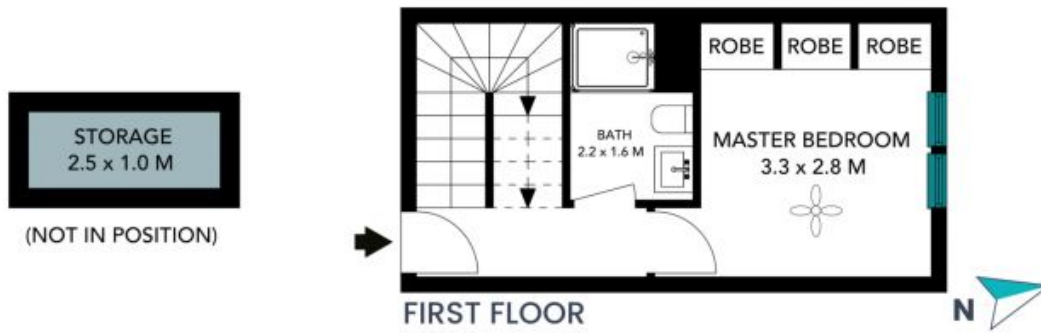


FIRST FLOOR

The floor plan is not to scale; measurements are indicative and in metres. All features included in this 3D plan are for inspiration purposes only. This is not an exact replica of the property or the position of exterior elements. Plans should not be relied on. Interested parties should make and rely on their own enquiries.



SECOND FLOOR



FIRST FLOOR

The floor plan is not to scale, measurements are indicative and in metres. Exterior elements are not in position. Plans should not be relied on, interested parties should make and rely on their own enquiries. All other information provided has been collected from reliable sources but cannot be guaranteed for accuracy.