

9 Rosewall Place Berkeley, NSW



SOLD BY STONE REAL ESTATE | PAUL PIACENTIN & DARNELL HASELAU

Price:

\$765,500

Solid brick gem in an exclusive cul-de-sac address



Paul Piacentin

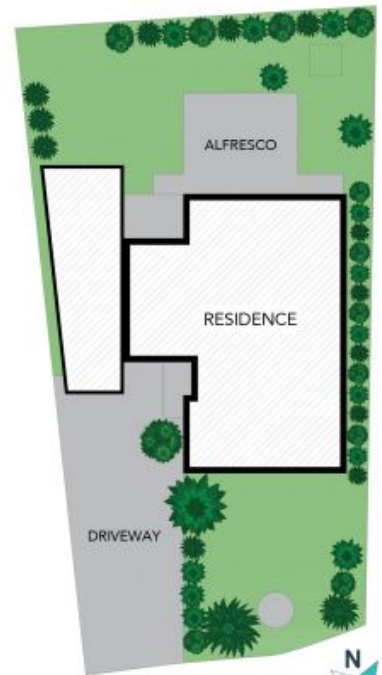
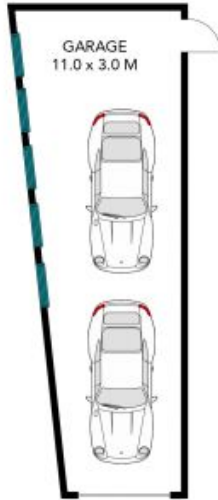
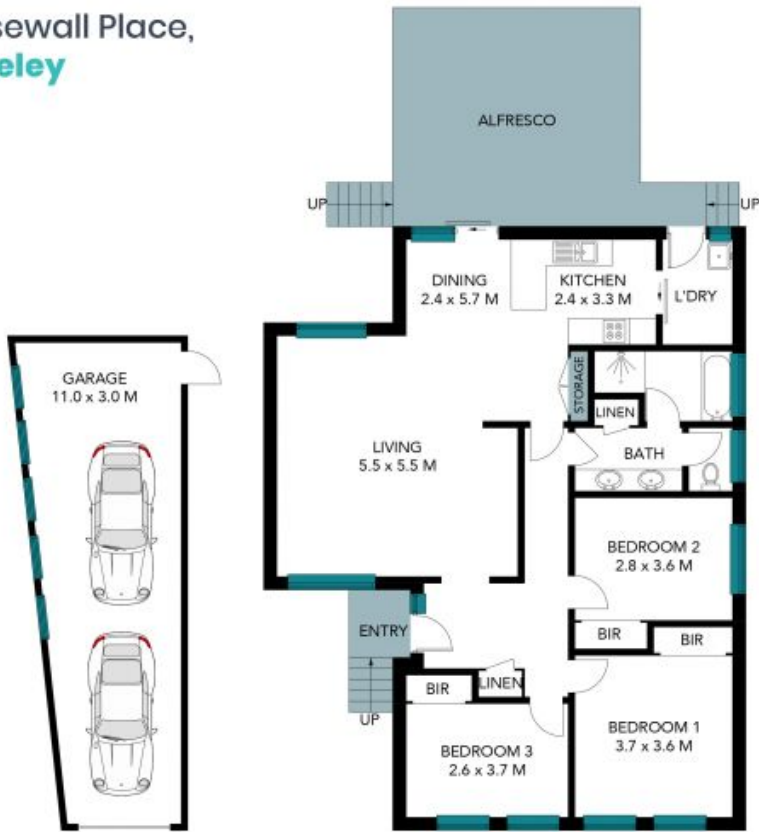
0411 754 884



Darnell Haselau

0426 400 240

9 Rosewall Place,
Berkeley



(NOT SHOWN IN ACTUAL
LOCATION / ORIENTATION)

The site plan and floor plan are not to scale; measurements are indicative and in metres. Bushes and trees are placed for illustration purposes. Plans should not be relied on. Interested parties should make and rely on their own enquiries. All other information provided has been collected from reliable sources but cannot be guaranteed for accuracy.