



2 Jersey Street Mount Colah, NSW



**Sold by Roya Amini & Steve Noakes 0430 127 899**

Sold by Roya Amini & Steve Noakes 0430 127 899

Boasting a convenient location this modern duplex features light filled interiors, multiple living spaces that flow seamlessly together. With four spacious bedrooms all with BIRs & ceiling fans, the master suite offers a walk-in robe, ensuite and private balcony. Most rooms capture a green outlook, generous courtyard and generous lawn for the kids to enjoy.

**Price:**

Sold by Roya Amini & Steve Noakes 0430 127 899



**Steve Noakes**

0431 620 422



**Roya Amini**

0430 127 899

2 Jersey Street  
Mount Colah

STONE



GROUND LEVEL



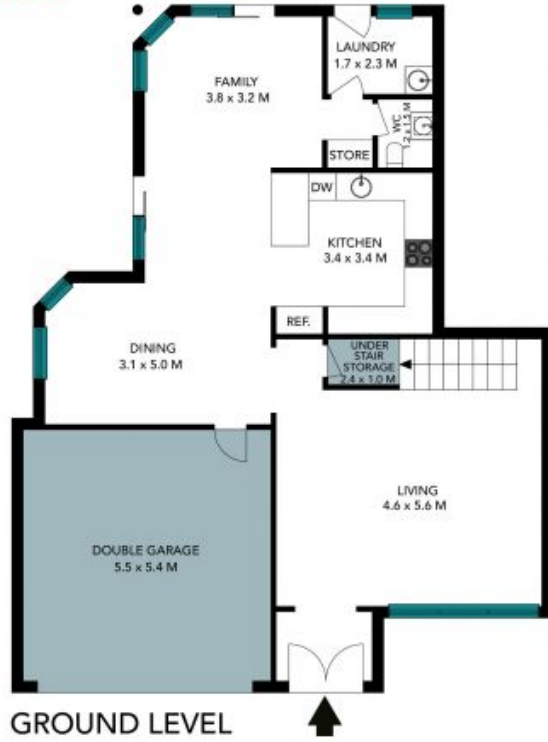
LEVEL 1



Internal Living: 194 sqm  
External Living: 7 sqm  
Total Living Area: 201 sqm

The floor plan is not to scale; measurements are indicative and in metres. All features included in this 3D plan are for inspiration purposes only. This is not an exact replica of the property or the position of exterior elements. Plans should not be relied on. Interested parties should make and rely on their own enquiries.

2 Jersey Street  
Mount Colah



Internal Living: 194 sqm  
 External Living: 7 sqm  
 Total Living Area: 201 sqm

The floor plan is not to scale, measurements are indicative and in metres. Exterior elements are not in position. Plans should not be relied on. Interested parties should make and rely on their own enquiries. All other information provided has been collected from reliable sources but cannot be guaranteed for accuracy.

