



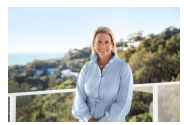
25 Sybil Street Newport, NSW 3  2  3 

**Leased**

Privately situated at the top of a secluded driveway, this Rainforest Retreat is enveloped by luscious gardens, alfresco entertaining spaces and stunning ocean views to Newport Reef. Spacious lounge complete with combustion fireplace leads to separate dining and wide deck. All three bedrooms are well sized, host ocean views and built-in wardrobes. Lock-up garage, carport, off street parking and turning bay. Pet friendly including invisible dog 'hidden fence' around property boundaries.

- Three carpeted bedrooms with built-in wardrobes and ocean views
- Two bathrooms, 1 with shower over bath; plus powder room downstairs
- Large lounge room with laminate timber floor and combustion fireplace
- Ducted reverse cycle air conditioning throughout
- Dining room adjacent to kitchen with plenty of storage and laundry cupboard
- Various timber decks for relaxing; main nor east facing entertaining deck
- Secluded alfresco seating/bbq area surrounded by rainforest gardens
- Ocean view to Newport Reef, walk to Newport Rugby field, beach, bus and shops

**Price:** Leased  
**Available Date:** 30/03/2023



**Simone Sinclair**  
0405 470 250



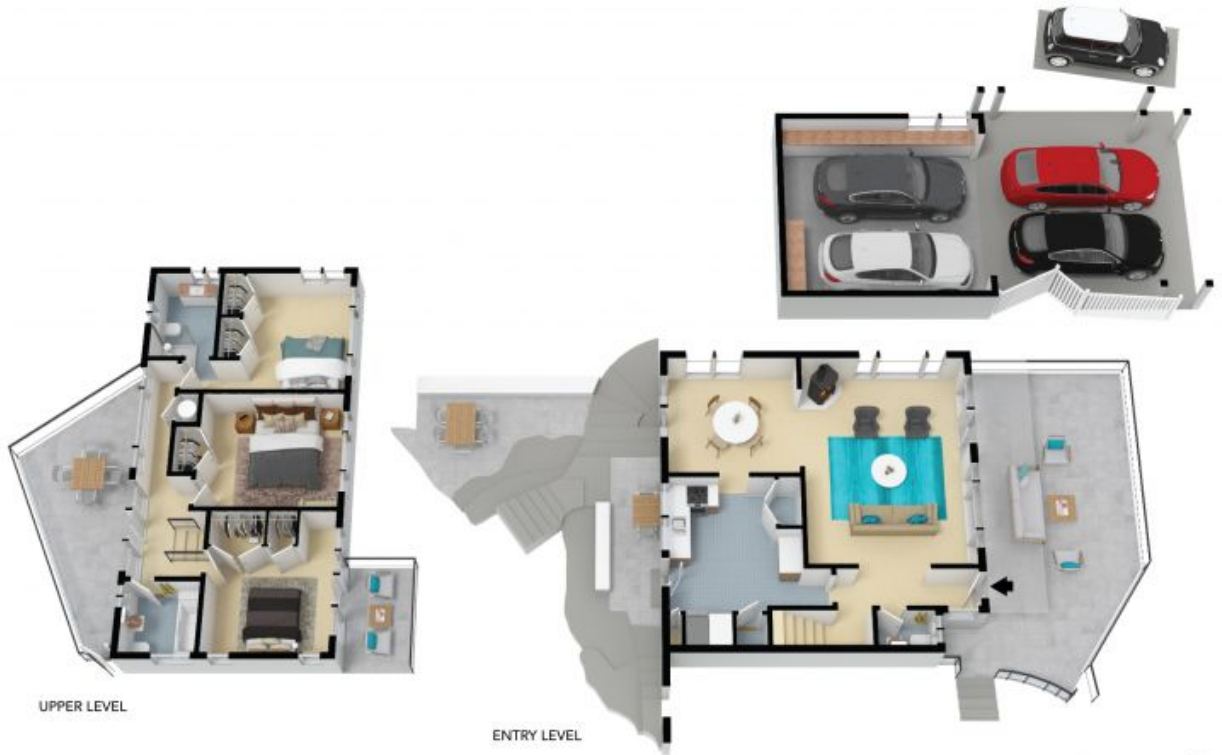
**Sarah Jarvis**



The site plan and floor plan are not to scale, measurements are indicative and in meters. Shades and lines are placed for illustration purposes. Plans should not be relied on. Interested parties should make and rely on their own enquiries. All other information provided has been collected from reliable sources but cannot be guaranteed for accuracy.

25 Sybil Street, Newport





UPPER LEVEL

ENTRY LEVEL

The floor plan is not to scale, measurements are indicative and in metric. All features included in this 3D plan are for inspiration purposes only. This is not an exact replica of the property or the position of exterior elements. Plans should not be relied on. Interested parties should make and rely on their own enquiries.

25 Sybil Street, Newport

