



8 Victoria Street East Maitland, NSW



Investors and young families take note

With a traditional cottage frontage and great location, this three-bedroom home will be the pick of the bunch for investors and young families! The lounge and dining spaces are naturally bright, comfortable and flow easily into the kitchen. The kitchen and meals areas feature plenty of bench space and cabinetry. All three bedrooms are freshly carpeted, the master room is massive and features a versatile home office. The sun-dappled backyard offers a double garage and rare side access, all on an immaculate 607sqm fully fenced block.

Located just 2kms to East Maitland Primary, 3kms to Maitland Hospital, only 3.7kms to Stockland Greenhills and directly opposite Centennial Park ? you are guaranteed a peaceful lifestyle while being located close to all that Maitland has to offer!

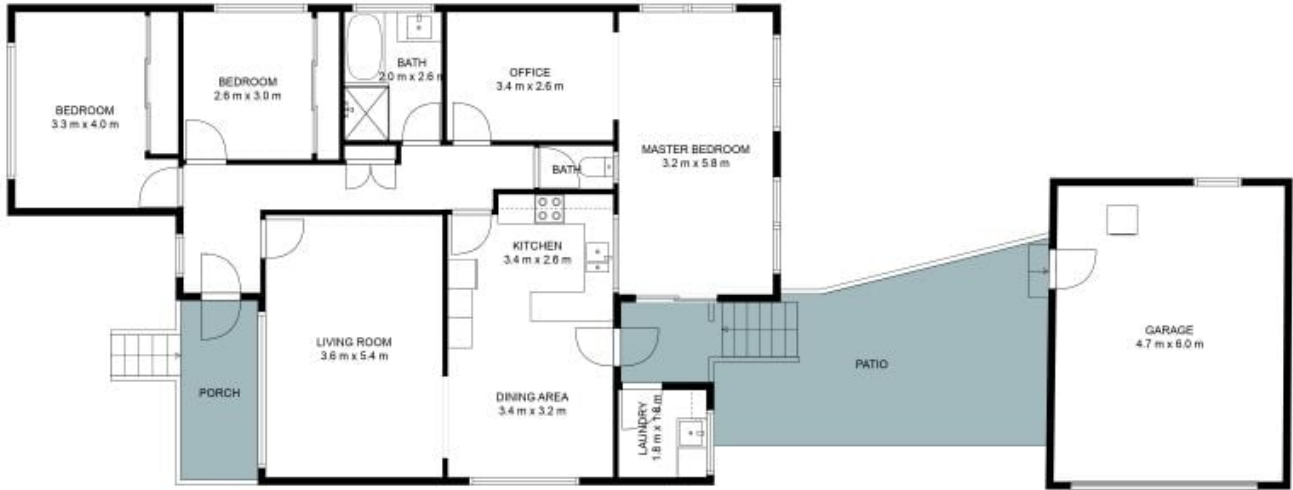
Price: \$641,000



Matthew Clarkson

0456 791 524

8 Victoria Street
East Maitland



The site plan and floor plan are not to scale; measurements are indicative and in metres. Bushes and trees are placed for illustration purposes. Plans should not be relied on. Interested parties should make and rely on their own enquiries. All other information provided has been collected from reliable sources but cannot be guaranteed for accuracy.



8 Victoria Street
East Maitland



The site plan and floor plan are not to scale; measurements are indicative and in metres. Bushes and trees are placed for illustration purposes. Plans should not be relied on. Interested parties should make and rely on their own enquiries. All other information provided has been collected from reliable sources but cannot be guaranteed for accuracy.