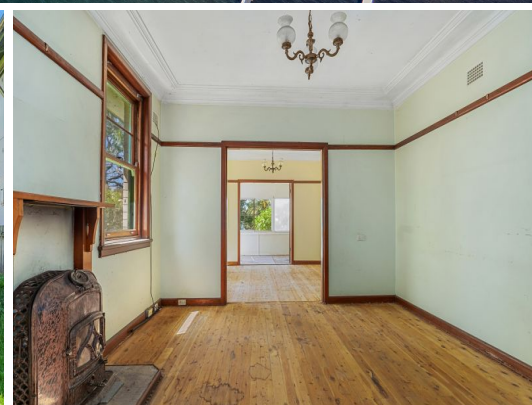


69 Albany St  
POINT FREDERICK

STONE



69 Albany Street Point Frederick, NSW

4  2  2 

### Absolute Waterfront First Time Offered in 60 years

An incredibly rare opportunity to realise your waterfront lifestyle dream on The Central Coast's ultimate peninsula address. This tightly held absolute waterfront property, in the exclusive suburb of Point Frederick, is on the market for the first time in almost 60 years. Only 40 minutes from Sydney's North Shore, this remarkable property comprises an expansive 1,575 sq/m parcel of land with an original liveable double-brick four-bedroom home at the roadside end. Subdivision potential presents a golden opportunity for astute investors or developers, or build your own oasis and wake up every day to uninterrupted sweeping vistas of the spectacular Brisbane Waters.

**Price:** Auction  
**Council Rates:** \$4,835.90/year (approx)  
**Water Rates:** \$848.00/year (approx)



**Michael Norman**

0414 465 038

69 Albany St  
Point Frederick



The floor plan is not to scale; measurements are indicative and in metres. All features included in this 3D plan are for inspiration purposes only. This is not an exact replica of the property or the position of exterior elements. Plans should not be relied on. Interested parties should make and rely on their own enquiries.



Ground Floor Plan



First Floor Plan

The Floor plan is not to scale; measurements are indicative and in metres. Plans should not be relied on. Interested parties should make and rely on their own enquiries. All other information provided has been collected from reliable sources but cannot be guaranteed for accuracy.