



54/17-25 Boundary Street Roseville, NSW



## Prestigious North Facing Apartment in the Heart of Roseville

Kew apartments provide an exclusive, refined lifestyle within the sophisticated and upscale neighbourhood of Roseville. The apartments boast elegant architecture and spacious interiors, offering a serene and charming ambiance that allows residents to relax and enjoy life. Enjoying all day sunshine from north facing balcony on level 3.

**Price:** Contact Agent  
**Council Rates:** \$355.00 p/q  
**Water Rates:** \$166.00 p/q  
**Strata Rates:** \$1,220.00 p/q



**Joyce Jingxin Cai**

0420 363 538

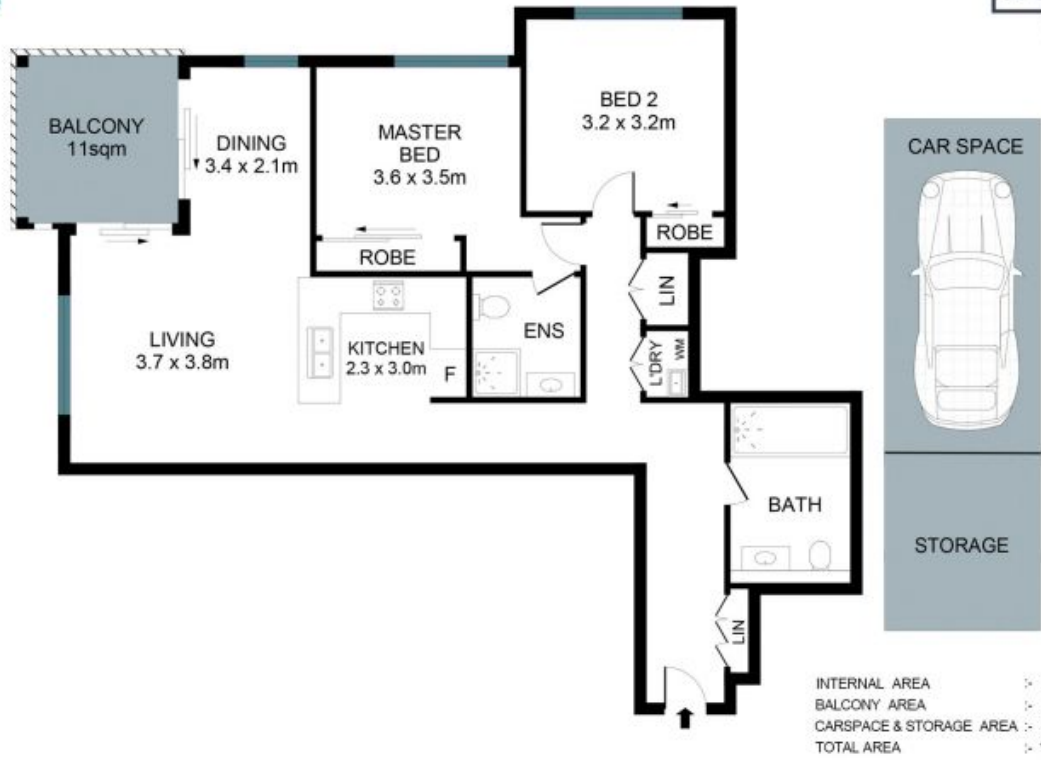


**Jill Henry**

0416 493 555

54/17-25 Boundary Street  
Roseville

STONE



The site plan and floor plan are not to scale; measurements are indicative and in metres. Bushes and trees are placed for illustration purposes. Plans should not be relied on. Interested parties should make and rely on their own enquiries. All other information provided has been collected from reliable sources but cannot be guaranteed for accuracy.