



4/108 James Ruse Drive Rosehill, NSW



Light, Bright & Airy

Positioned opposite Rosehill Gardens and boasting a generous layout is this large 2 bedroom plus study apartment. Conveniently located, you will find yourself only minutes walk to local shops, bus transport and the upcoming Light Rail. Also within close driving proximity is Parramatta CBD with its vibrant restaurants & caf?'s, Western Sydney University and the M4 motorway.

Price: \$580,000



Aaron Lih

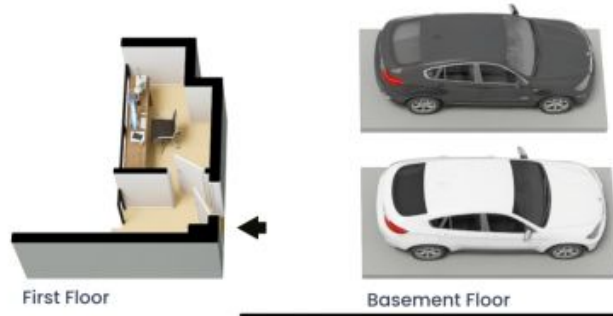
0420 825 598



Mariah Edwards

0420 744 406

4/108 James Ruse Dr
Rosehill

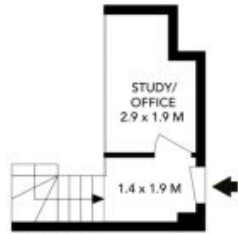


Ground Floor



The floor plan is not to scale; measurements are indicative and in metres. All features included in this 3D plan are for inspiration purposes only. This is not an exact replica of the property or the position of exterior elements. Plans should not be relied on. Interested parties should make and rely on their own enquiries.

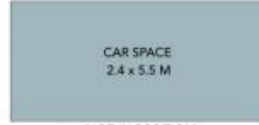
4/108 James Ruse Dr
Rosehill



First Floor



(NOT IN POSITION)



(NOT IN POSITION)

Basement Floor



Ground Floor



The floor plan is not to scale, measurements are indicative and in metres. Exterior elements are not in position. Plans should not be relied on, interested parties should make and rely on their own enquiries. All other information provided has been collected from reliable sources but cannot be guaranteed for accuracy.