



20 Kardella Avenue Killara, NSW

4

2

2

Flawlessly updated family retreat in premier east side

Impeccably presented, this c.1930s craftsman home presents impressive updates that bring interiors to life for modern living and entertaining. The single level layout hosts a sundrenched family room open to the garden, a classic stone kitchen with Ilve range, and character-filled lounge and dining. A designer eye for quality and style creates a calm, refined aesthetic. Four spacious bedrooms share two exquisite marble-accented bathrooms. The resort-inspired barbecue cabana delivers exceptional entertaining reflected in the sanctuary-calm of the heated pool enveloped by landscaped gardens. Walk to rail and Killara High.

Price:

Sold prior to Auction



Matt Payne

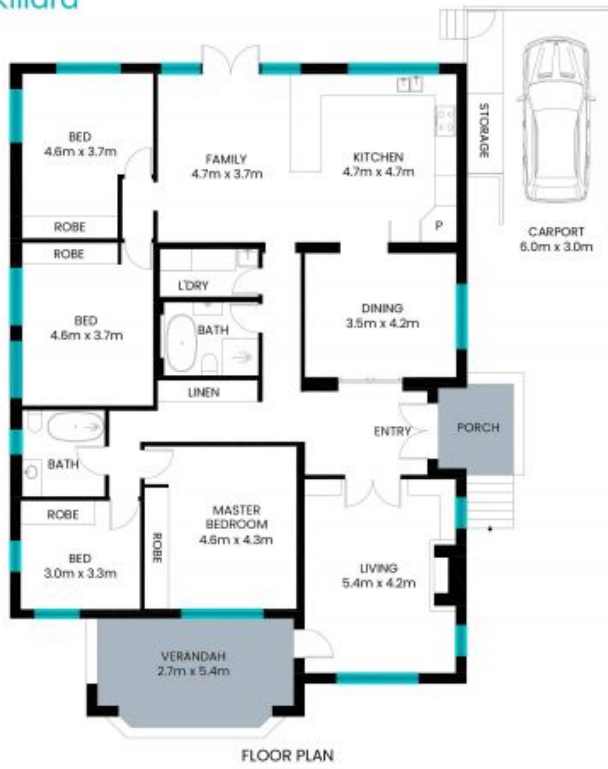
0435 825 242



Ryan Woo

0410 884 680

20 Kardella Avenue
Killara



STONE

Internal area: 187m²
Covered area: 60m²

The site plan and floor plan are not to scale; measurements are indicative and in meters. Bushes and trees are placed for illustration purposes. Plans should not be relied on. Interested parties should make and rely on their own enquiry. All other information provided has been collected from reliable sources but cannot be guaranteed for accuracy.