



10 Yanagang Street Waterfall, NSW



## Impressive family home in private leafy setting

Capturing all-day northerly sunlight and stunning bushland views from an elevated 809sqm (approx.) block, this impressive home enjoys a wonderful sense of warmth and seclusion. It has been thoughtfully updated over two inviting levels, while offering an exquisite backyard amidst lush greenery. Set on a 809sqm (approx.) parcel, the home is a walk from the National Park, Waterfall Public School and Waterfall Station.

**Price:** \$1,115,000  
**Council Rates:** \$411.00 p/q  
**Water Rates:** \$156.70 p/q



**Gerard Foote**

0433 421 333



**Liam Pesa**

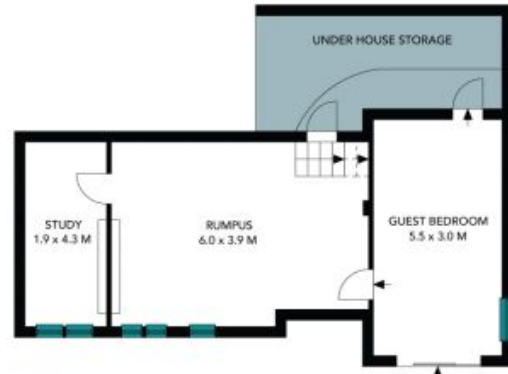
0423 601 244



(NOT IN POSITION)



Elevated Ground Floor



Ground Floor



The floor plan is not to scale; measurements are indicative and in metres. Exterior elements are not in position. Plans should not be relied on. Interested parties should make and rely on their own enquiries. All other information provided has been collected from reliable sources but cannot be guaranteed for accuracy.



Elevated Ground Floor



Ground Floor



The floor plan is not to scale; measurements are indicative and in metres. All features included in this 3D plan are for inspiration purposes only. This is not an exact replica of the property or the position of exterior elements. Plans should not be relied on. Interested parties should make and rely on their own enquiries.