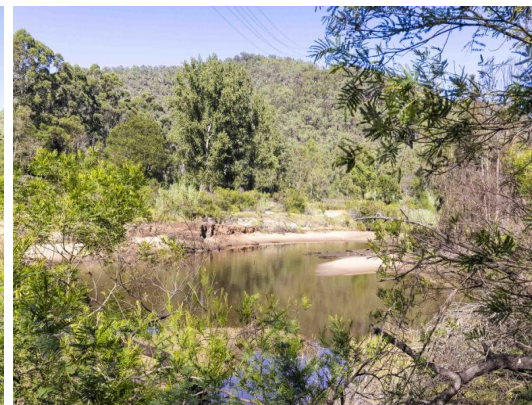




*Approximate Boundary



1346 Settlers Road St Albans, NSW

40 Acres Close To St Albans Village.

Stonehaven is a picturesque and serene 40 acre bush block less than 1km from the historic St Albans Village & Settlers Arms Inn.

The elevated flood free positioning presents spectacular views of the beautiful St Albans Valley and Macdonald River. Surrounded by national parkland with an abundance of natural flora and fauna it is a nature lovers paradise, if you are lucky you may even spot one of the resident koalas.

A lovely location to build your dream weekender (STCA) there are a number of level areas on the block along with a freshwater spring.

A phone line exists, power would need to be restored and water tanks installed.

The potential is endless.

For further details or to book your private inspection contact Rhys Coles 0406 704 040.

All information contain...

Price: Guide: \$450,000 - \$500,000



Rhys Coles

0406 704 040



Sally Thomson

0437 454 942