



1/4 Grafton Crescent Dee Why, NSW 1 1 1

Sensational garden apartment in a leafy cul-de-sac

A sensational first home, downsizer or investment hushed away in a tranquil park-side cul-de-sac, this exceptionally bright and spacious apartment opens to an oversized covered balcony bathed in northerly sunshine. Placed in a boutique building of eight with direct access to sunny near level common lawn, it is only footsteps from Dee Why Oval and within a level stroll of the buzzing town centre and Dee Why Beach.

Price: \$610,000



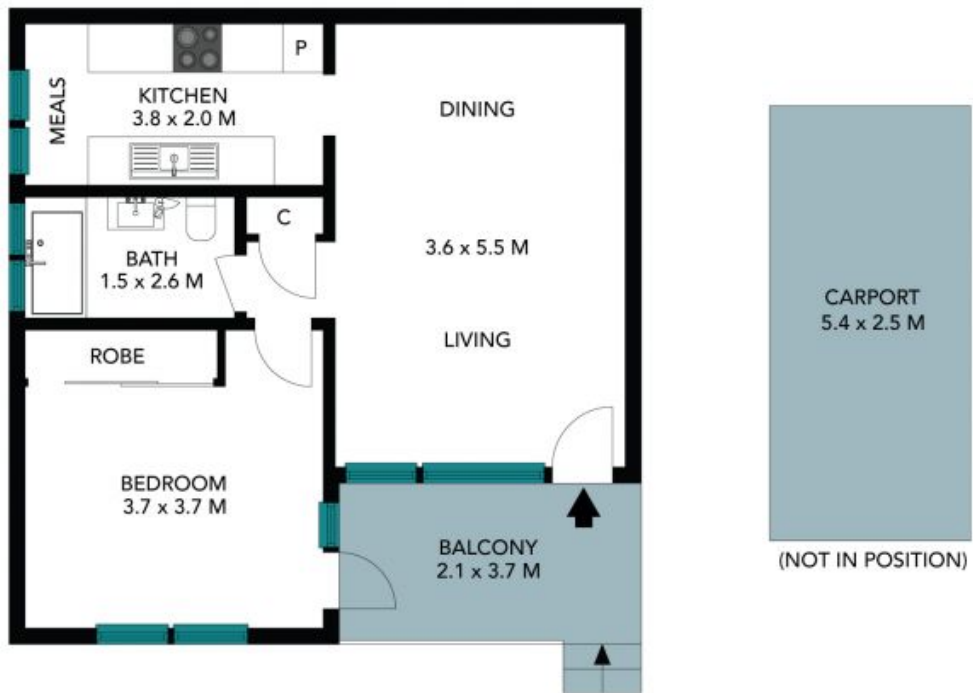
Catherine Wilson

0421 966 570



Tim Mumford

0421 942 693



The floor plan is not to scale; measurements are indicative and in metres. Colour elements are not in position. Plans should not be relied on. Interested parties should make and rely on their own enquiries. All other information provided has been collected from reliable sources but cannot be guaranteed for accuracy.

1/4 Grafton Crescent
[Dee Why](#)

STONE



The floor plan is not to scale; measurements are indicative and in metres. All features included in this 3D plan are for inspiration purposes only. This is not an exact replica of the property or the position of exterior elements. Plans should not be relied on. Interested parties should make and rely on their own enquiries.