



10 Koola Avenue Killara, NSW

4 

3 

2 

'Arbourville' ? Californian Bungalow in Killara's prestigious east side

Price:

Contact Agent



Ryan Woo

0410 884 680



Steven Kourdis

0402 555 675

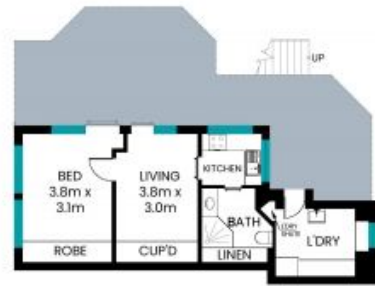
10 Koola Avenue
Killara



SITE PLAN



ENTRY LEVEL



LOWER LEVEL



Internal area: 234m²
Covered area: 87m²
Total area: 321m²

The site plan and floor plan are not to scale; measurements are indicative and in meters. Bushes and trees are placed for illustration purposes. Plans should not be relied on. Interested parties should make and rely on their own enquiry. All other information provided has been collected from reliable sources but cannot be guaranteed for accuracy.