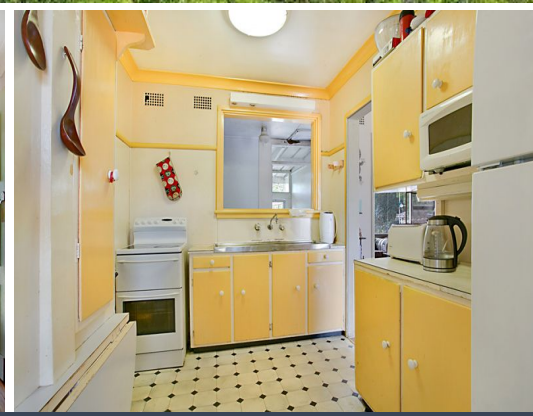
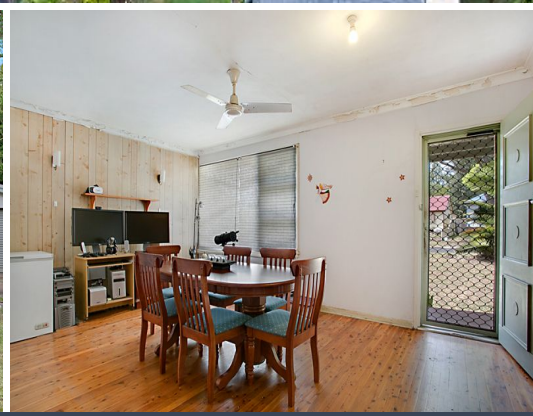


STONE



676.6sqm



37 Brudenell Avenue Leumeah, NSW

3  1  2 

Sold by Anthony Bekiaris - \$550,000

Price: \$530,000 - \$570,000

Unique Family Residence In A Quiet Leumeah Enclave
A rare and prized offering to add further value, this exceptional property is tucked away in a secluded enclave in Leumeah which makes this fantastic opportunity only a short walk from Leumeah Train Station and Leumeah Shops. The home is positioned on a commanding approx 676.6sqm with possible granny flat potential (Subject To Council Approval).

- Features include:
- * 3 bedrooms with built-in wardrobes
 - * 1 bathroom
 - * Lounge and dining rooms
 - * Single lock-up garage
 - * Possible granny flat potential (S.T.C.A)
 - * Walking distance to Leumeah train station, shops and West Leagues Club

**Stone Real Estate -
Head Office**



Measurements are approximate. Not to scale. Illustrative purposes only