

23 Mossberry Street Blair Athol, NSW

6

2

4

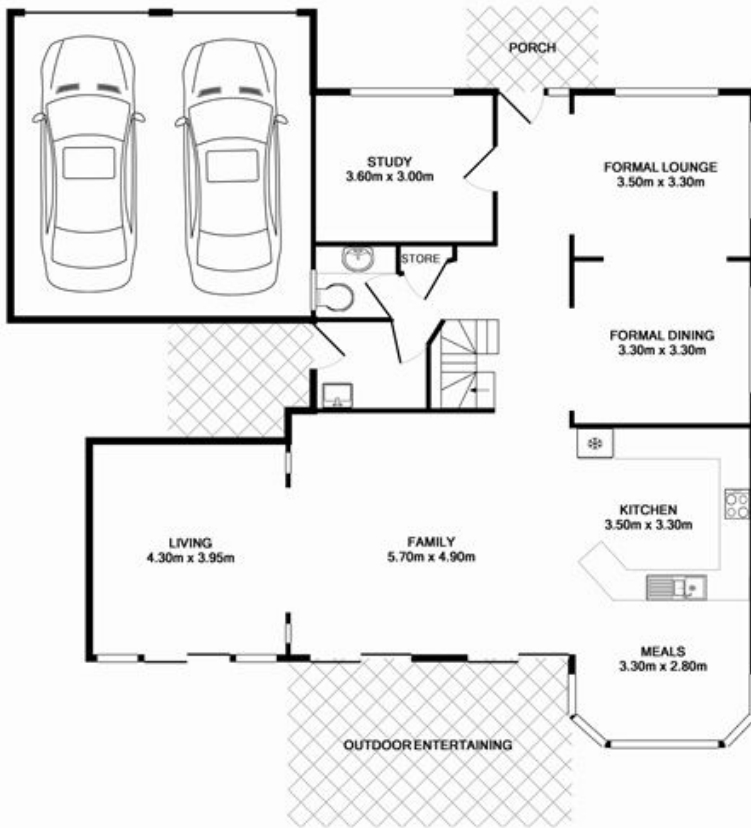
Suitable for a Large Family

- * Enormous floor plan with formal lounge, dining, meals, family and rumpus room
- * Six bedrooms featuring ensuite and his and hers walk in robe to main, three others have built in robes
- * Partially concreted backyard with covered outdoor sitting area
- * Close to University, TAFE, Campbelltown station and CBD
- * Double garage and ducted air conditioning

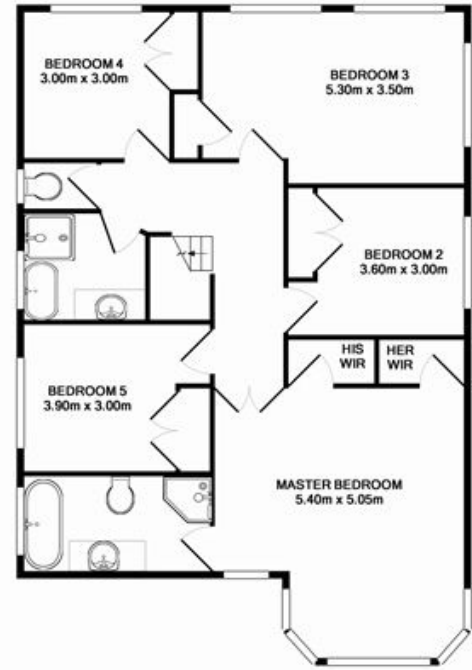
Price:

Price Guide \$500,000-\$550,000

Stone Real Estate -
Head Office



GROUND FLOOR
 APPROX. FLOOR
 AREA 150.4 SQ.M.
 (1716 SQ.FT.)



1ST FLOOR
 APPROX. FLOOR
 AREA 105.1 SQ.M.
 (1132 SQ.FT.)

TOTAL APPROX. FLOOR AREA 264.5 SQ.M. (2848 SQ.FT.)
 Measurements are approximate. Not to Scale. For illustrative purposes only.