



13 Lysander Avenue Rosemeadow, NSW

6

2

4

Presentation Plus!

- * This home is perfect for the growing family
- * Features 6 bedrooms, master with walk-in robe and ensuite
- * Multiple living areas with separate lounge and open plan family room off kitchen
- * Large screened enclosed sunroom
- * Single garage plus lock-up single carport
- * Located in popular Rosemeadow Gardens estate

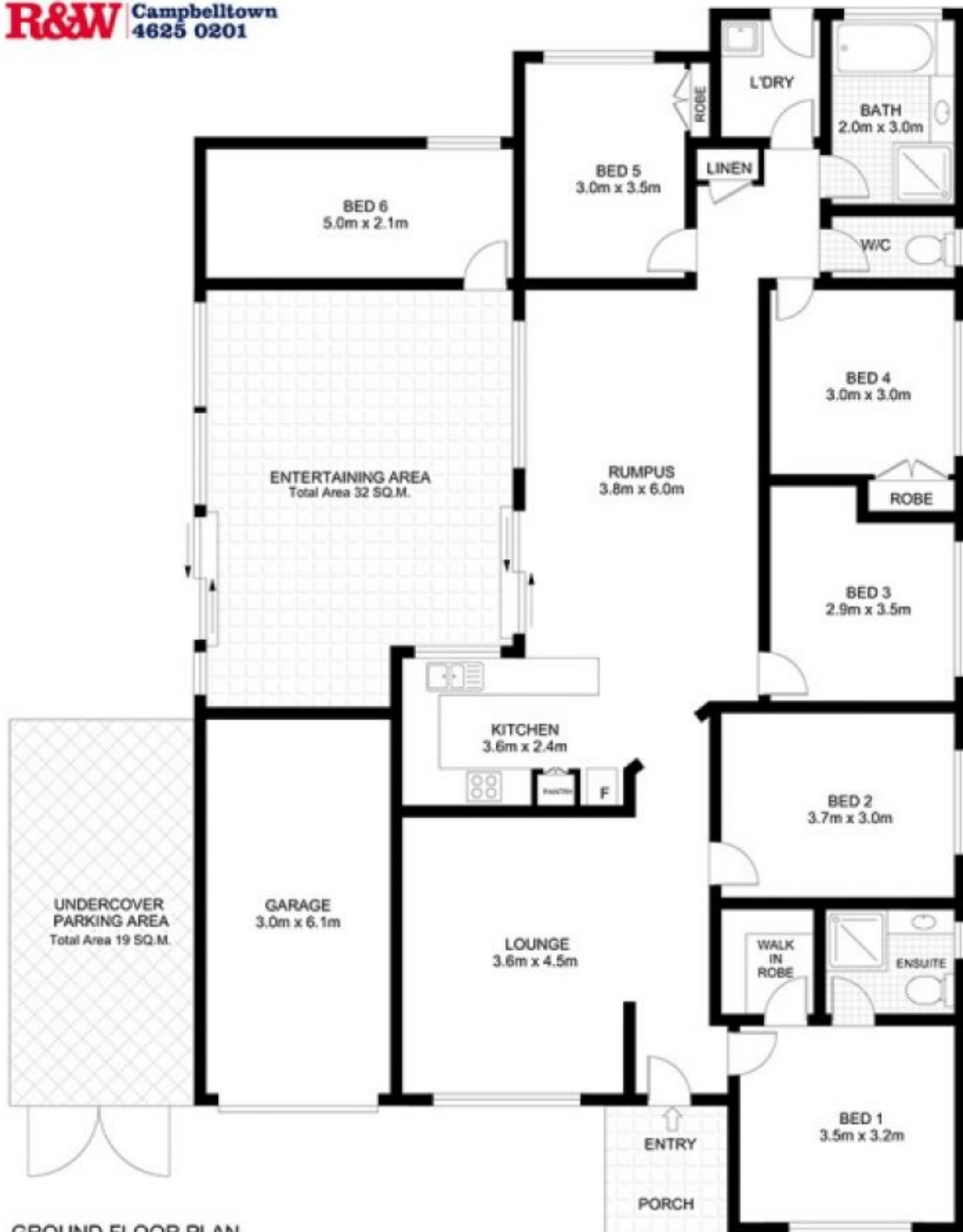
Price:

Price Guide \$410,000-\$430,000



Gary Luke

0418 451 105



GROUND FLOOR PLAN

GROSS INTERNAL FLOOR AREA 172 SQ.M.

ENTERTAINING AREA 32 SQ.M.

UNDERCOVER PARKING AREA 19 SQ.M.

APPROX. GROSS INTERNAL FLOOR AREA 223 SQ.M. / 2400 SQ.FT.

Whilst every attempt has been made to ensure the accuracy of the floor plan contained here, measurements of doors, windows and rooms are approximate and no responsibility is taken for any error omission or mis-statement. These plans are for representation purpose only and should be used as such by any prospective purchaser. The services, systems and appliances listed in this specification have not been tested and no guarantee as to their operating ability or their efficiency can be given.

