



105 Nymboida Crescent Ruse, NSW 4 2 4

### Original Owners - Superior Location

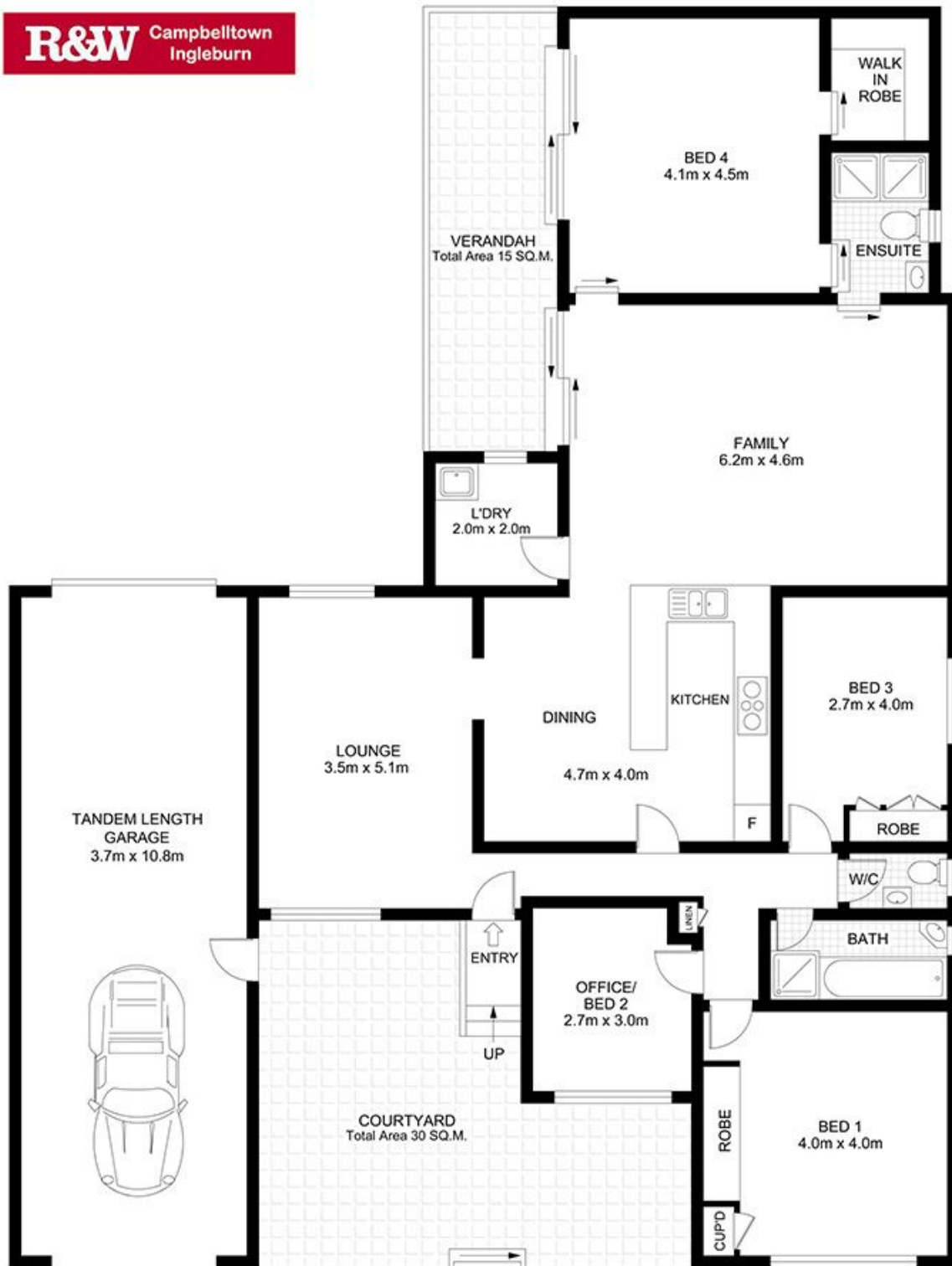
- \* Immaculate and fastidiously maintained 4 bedroom home
- \* Quality fittings and fixtures throughout
- \* Queensland blackwood timber kitchen with stainless steel appliances including dishwasher
- \* Renovated bathroom with spa ensuite to master
- \* Family/rumpus room with separate formal lounge room
- \* Tandem length drive through garage, large covered pergola
- \* Manicured gardens front and back, rainwater tanks, garden shed and solar power

**Price:** Price Guide \$400,000-\$440,000



**Gary Luke**

0418 451 105



**GROUND FLOOR PLAN**

GROSS INTERNAL FLOOR AREA 192 SQ.M.  
VERANDAH AREA 15 SQ.M.  
COURTYARD AREA 30 SQ.M.



**APPROX. GROSS INTERNAL FLOOR AREA 237 SQ.M. / 2551 SQ.FT.**

Whilst every attempt has been made to ensure the accuracy of the floor plan contained here, measurements of doors, windows and rooms are approximate and no responsibility is taken for any error omission or mis-statement. These plans are for representation purpose only and should be used as such by any prospective purchaser. The services, systems and appliances listed in this specification have not been tested and no guarantee as to their operating ability or their efficiency can be given.