



3 Sassafra Close Bradbury, NSW



Sold by Russell Wyer - \$501,000!

Price:

Offers Above \$450,000

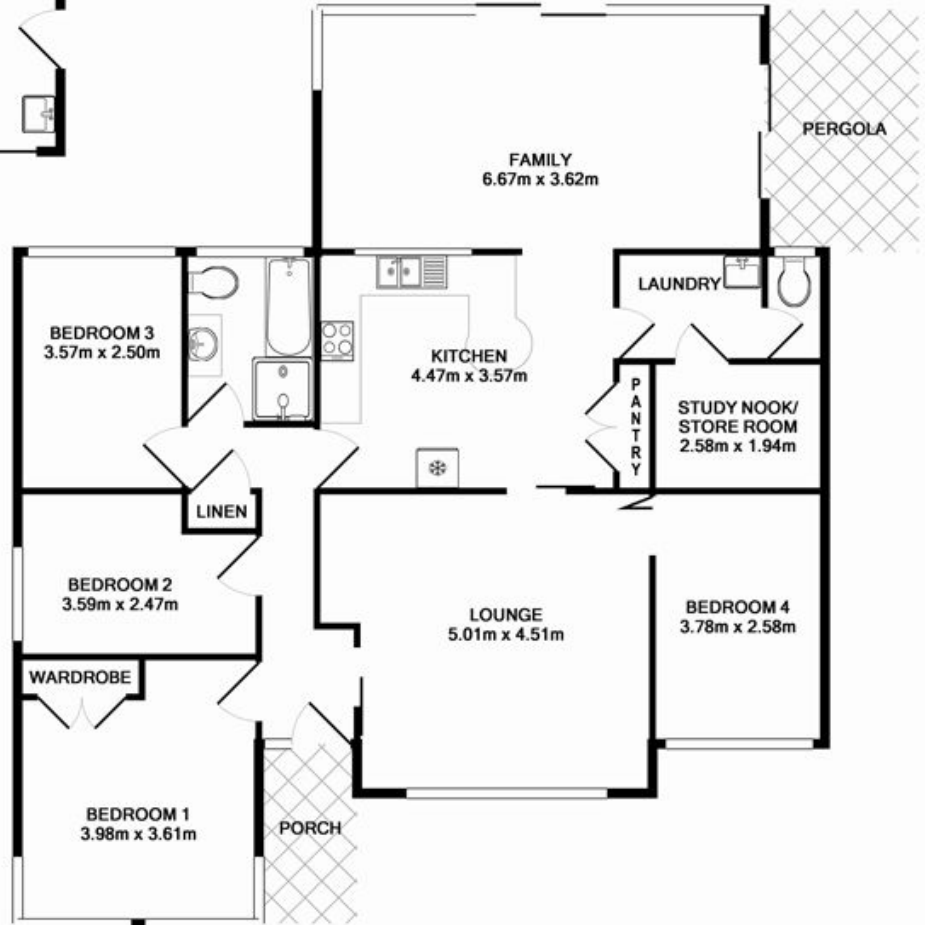
Fabulous Family Home

- * First time offered to the market in over 30 years
- * Quiet cul-de-sac location within walking distance to local schools and shopping village
- * Four bedrooms, main with built-in-robe and air conditioner
- * Spacious kitchen with breakfast bar that overlooks the family room
- * Timber floors, modern bathroom, 2nd toilet, study/store room
- * Detached double garage, private rear yard perfect for the growing family



Russell Wyer

0414 867 707



TOTAL APPROX. FLOOR AREA 160.3 SQ.M. (1725 SQ.FT.)
Measurements are approximate. Not to Scale. For illustrative purposes only.