



255 Junction Road Ruse, NSW



SOLD BY RUSSELL WYER, MICHELLE BALABKA AND NATASHA MOSS - \$580,000

Price:

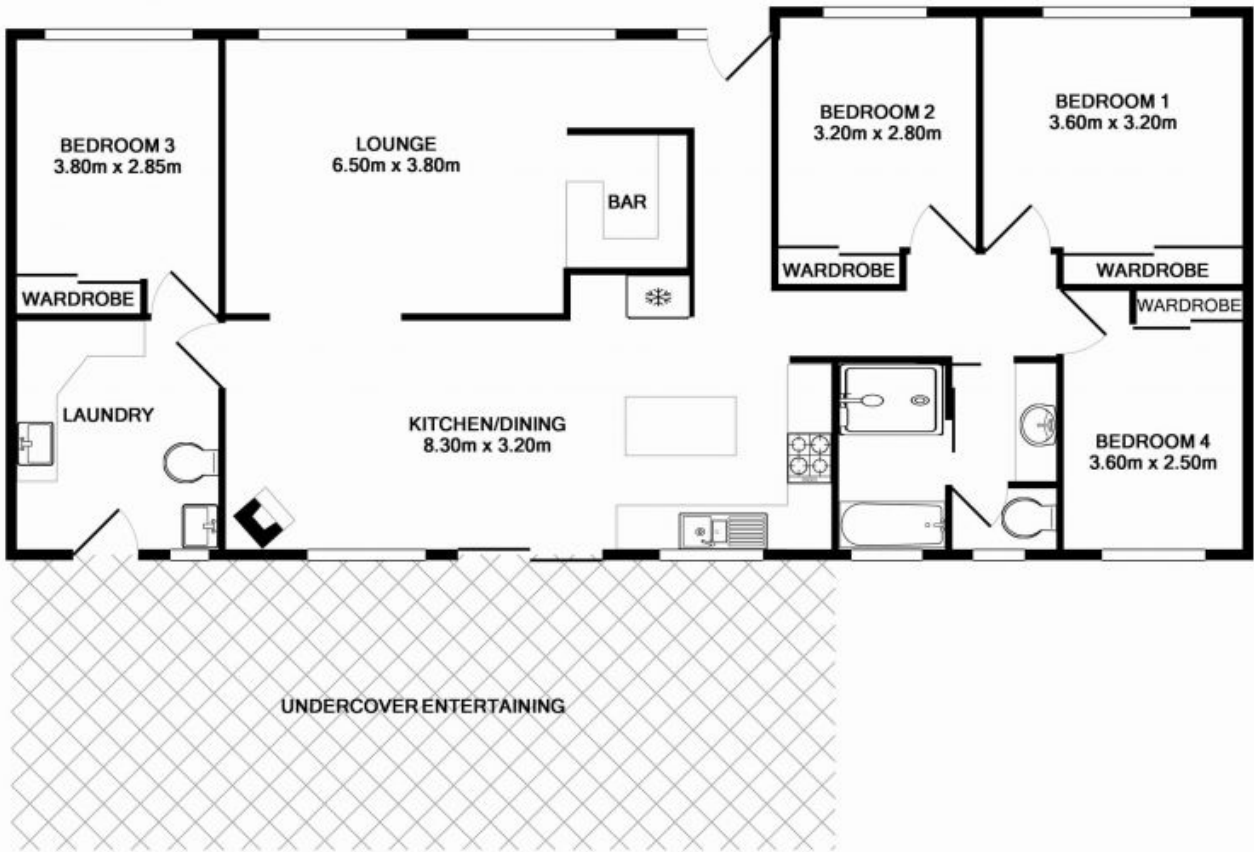
Offers Above \$530,000

- * Impressive 838.8m² block with extra wide frontage
- * Ideal for future Granny Flat or Dual Occupancy (subject to council approval)
- * Beautifully presented family home with renovated bathroom & kitchen
- * Fantastic rear garden with pool, detached garaging and undercover entertaining area
- * Positioned walking distance to the local shops and primary school, this home will tick all the boxes



Russell Wyer

0414 867 707



Measurements are approximate. Not to Scale. For illustrative purposes only.