



244 The Parkway Bradbury, NSW

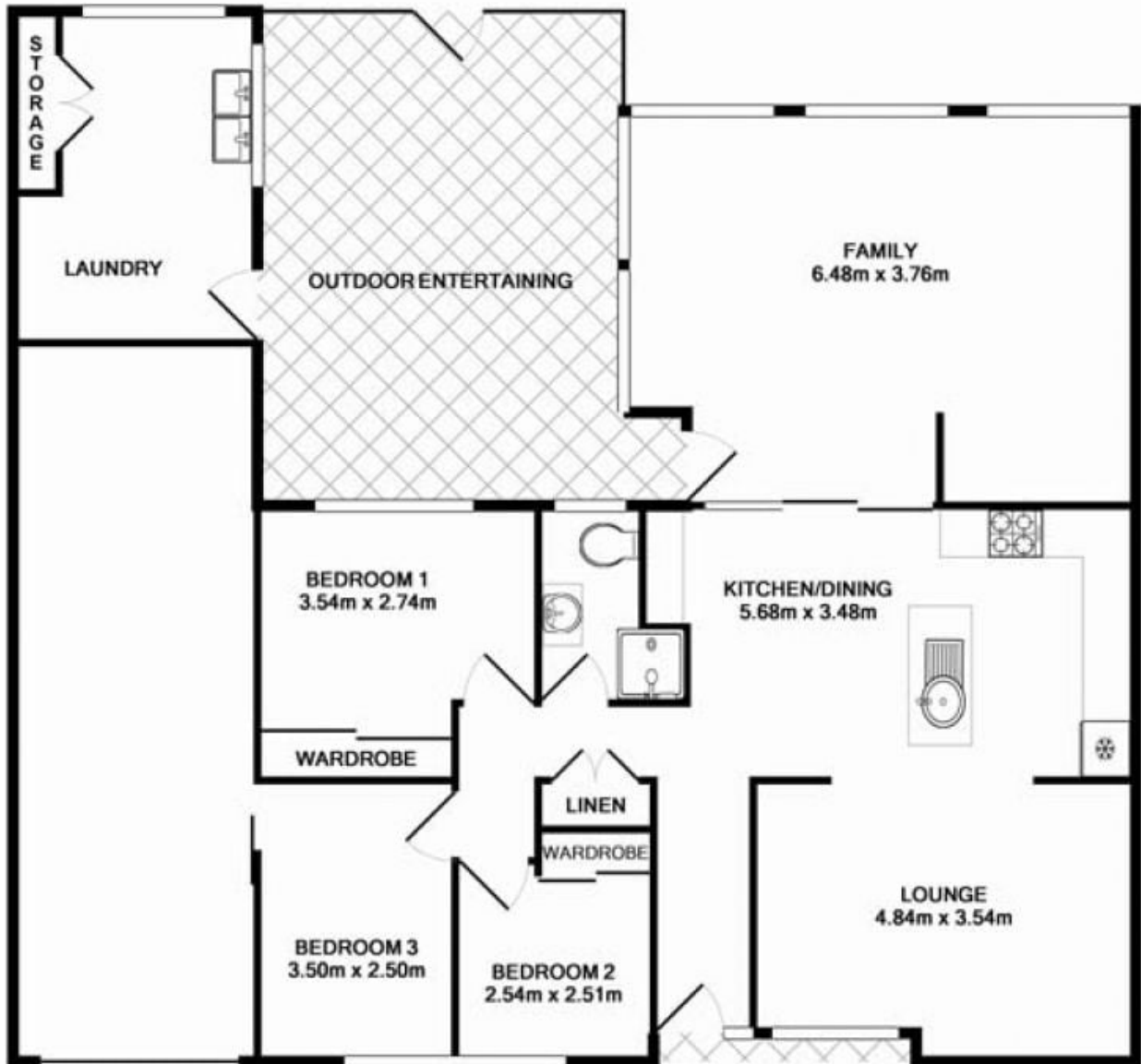


SOLD BY ANTHONY BEKIARIS - \$562,500

Price: \$550,000 - \$570,000

A relaxed family sanctuary of resort-style luxury
 Family excellence is elevated to new heights in this peaceful and private residence where magnificent proportions showcase designer finishes and light filled living spaces. Its flowing layout displays a superb modern design that provides an easycare living environment where privacy, space and style merge with great success. This spacious property is also exclusively located within easy access to local shops, schools and transport.
 A selection of formal lounge, dining and family rooms all with timber flooring throughout.
 An easy flow from interiors to the alfresco spaces.
 Modern bathroom.
 Large side access.
 Outdoor entertaining area.
 Chef's island kitchen fully equipped with high-end appliances and a ceasor stone bench top.
 Three Spacious bedrooms with built-in wardrobes to two.
 626sqm block.

**Stone Real Estate -
 Head Office**



Measurements are approximate. Not to scale. Illustrative purposes only