



12/12 Parkside Crescent Campbelltown, NSW

3

2

2

SOLD BY MATTHEW LAVERTY
0418281032

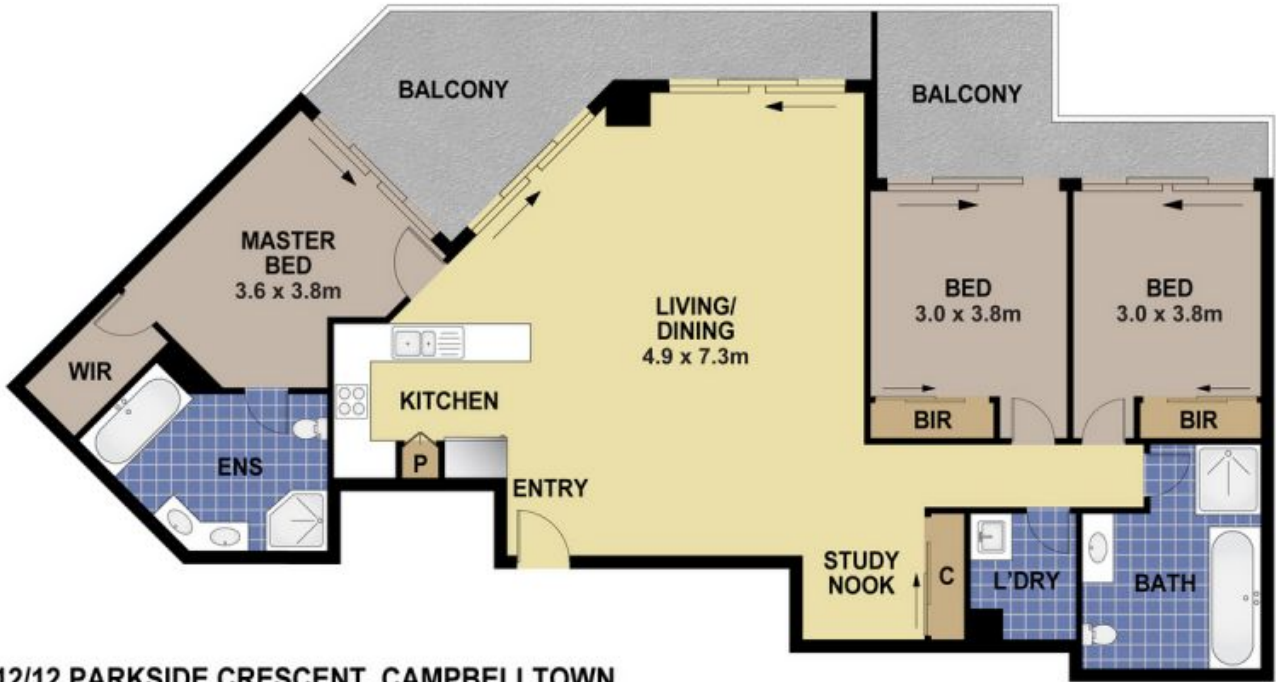
Price: \$650,000

Park Central Living

- Elevated first floor apartment in the sought after Park Central precinct
- Very spacious, single level open plan design with 2 balconies
- 3 big bedrooms, walk-in robe and built-in robes, 2 bathrooms
- Study nook, ducted air conditioning, natural gas, dishwasher, security parking and storage
- Perfect for owner occupier or investors with potential rental of approximately \$600 per week

Stone Real Estate -

Head Office



12/12 PARKSIDE CRESCENT, CAMPBELLTOWN

DISCLAIMER

PLANS SHOWN ARE FOR MARKETING PURPOSES ONLY. ALL DIMENSIONS ARE APPROXIMATE AND NOT TO SCALE. THEY ARE SUBJECT TO ERRORS AND INACCURACIES AND NO LIABILITY WILL BE ACCEPTED. INTERESTED PARTIES SHOULD MAKE THEIR OWN ENQUIRIES.
PRODUCED BY OPEN2VIEW 0467 999920.

