



8 Belmont Avenue Spring Farm, NSW 3  2  2 

You found the one!

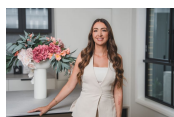
Experience comfortable living in this stunning three-bedroom home, situated in the highly desirable area of Spring Farm.

Price: \$790,000 - \$850,000



Anthony Grima

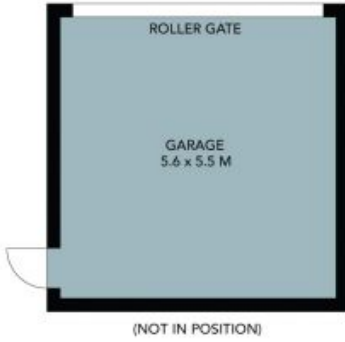
0421 228 414



Rebecca Philp

0403 613 271

8 Belmont Avenue
Spring Farm



Ground Floor



First Floor



The floor plan is not to scale; measurements are indicative and in metres. Several elements are not in position. Plans should not be relied on. Interested parties should make and rely on their own enquiries. All other information provided has been collected from reliable sources but cannot be guaranteed for accuracy.

8 Belmont Avenue
Spring Farm

STONE



Ground Floor



First Floor



The floor plan is not to scale; measurements are indicative and in metres. All features included in this 3D plan are for inspiration purposes only. This is not an exact replica of the property or the position of exterior elements. Plans should not be relied on. Interested parties should make and rely on their own enquiries.