

11/6 Fairway Close Manly Vale, NSW 2 1 1

Treetop tranquility and vibrant beachside living

Sunshine and gentle cross breezes flow through this apartment that capitalises on its unique parkland setting and maximises every aspect of its outdoor and indoor living spaces. Comprehensively refurbished and set on the top floor of a boutique complex, this residence enjoys treetop views with the very best of beachside living and urban centrality.

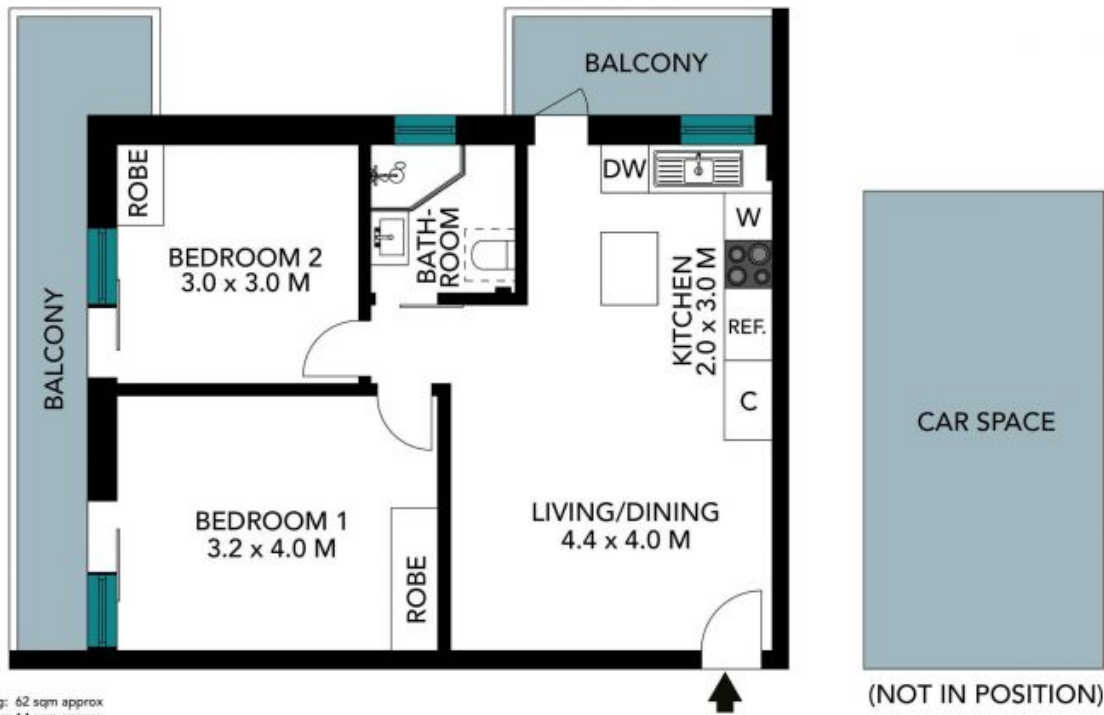
Price: Deposit taken
Available Date: 13/05/2023



Livi Hunt
 0420 466 538



Sarah Cass
 0478 086 411



Internal Living: 62 sqm approx
 External Living: 14 sqm approx
 Total Living Area: 76 sqm approx

The floor plan is not to scale; measurements are indicative and in metres. Exterior elements are not in position. Plans should not be relied on. Interested parties should make and rely on their own enquiries. All other information provided has been collected from reliable sources but cannot be guaranteed for accuracy.



11/6 Fairway Close, Manly Vale





Internal Living: 62 sqm approx
External Living: 14 sqm approx
Total Living Area: 76 sqm approx

The floor plan is not to scale, measurements are indicative and in metres. All features included in this 3D plan are for inspiration purposes only. This is not an exact replica of the property or the position of exterior elements. Plans should not be relied on. Interested parties should make and rely on their own enquiries.

11/6 Fairway Close, Manly Vale

