



58/16-20 Park Avenue Waitara, NSW



Large and sunny in premier lifestyle position

This immaculately refreshed modern apartment rests in a highly desirable central location opposite vivacious Mark Taylor Oval. Stretch out across spacious open plan interiors set in a well-maintained security complex. Fitness and leisure are at your gate, and it's a short distance to vibrant Hornsby retail and entertainment, and a stroll to Waitara rail.

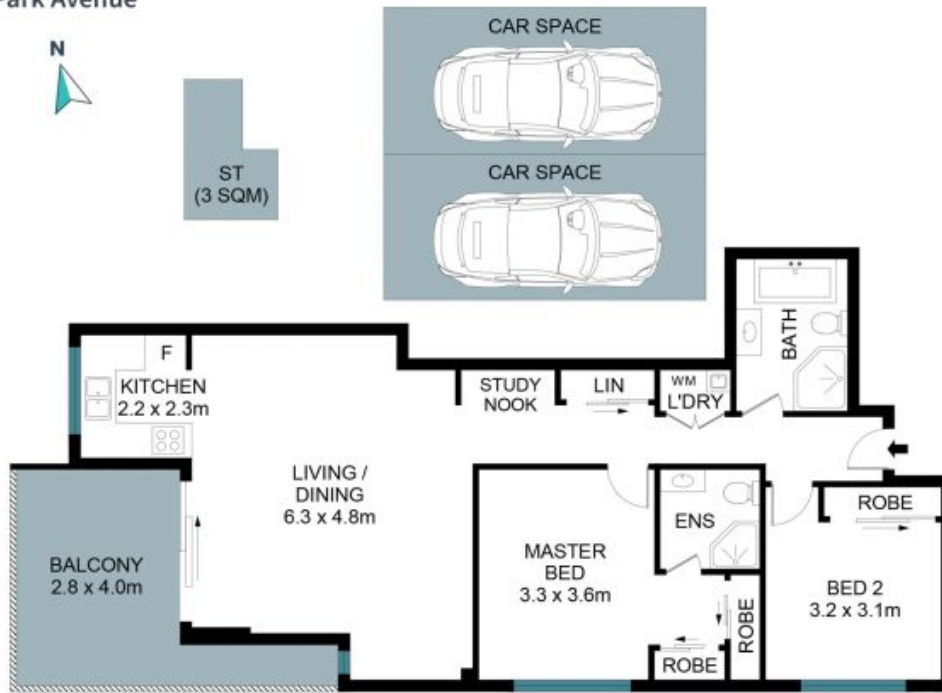
Price: \$780,000



Joyce Jingxin Cai

0420 363 538

58/16-20 Park Avenue
Waitara



INTERNAL & BALCONY AREA	:-	92 SQM
CAR SPACE AREA	:-	26 SQM
STORAGE AREA	:-	3 SQM
TOTAL AREA	:-	121 SQM

The site plan and floor plan are not to scale; measurements are indicative and in metres. Bushes and trees are placed for illustration purposes. Plans should not be relied on. Interested parties should make and rely on their own enquiries. All other information provided has been collected from reliable sources but cannot be guaranteed for accuracy.