



23A Bangaroo Street North Balgowlah, NSW



DEPOSIT TAKEN!

Cosy townhome basks in light, space and privacy (Entry on Serpentine Crescent)

Spacious interiors, easy living and the ideal floorplan rule in this townhome positioned on quiet Serpentine Crescent and with generous proportions, a fluid connection between indoors and out together with a prized rear-to-north aspect. Quietly tucked behind a hedge, this inviting home makes everyday life a breeze with its close proximity to schools, transport, shopping, and recreation.

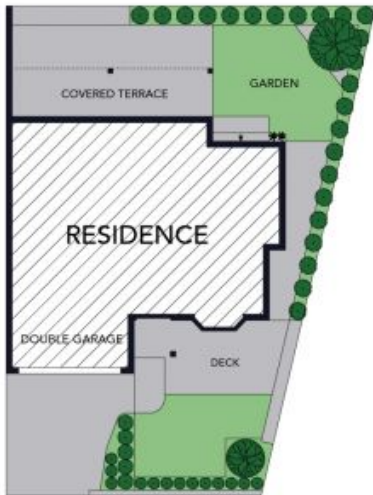
Price: Deposit taken

Available Date: 06/05/2023



Sarah Cass

0478 086 411



Site Plan



Ground Floor



First Floor

Internal Living: 245 sqm
External Living: 77 sqm
Total Living Area: 322 sqm

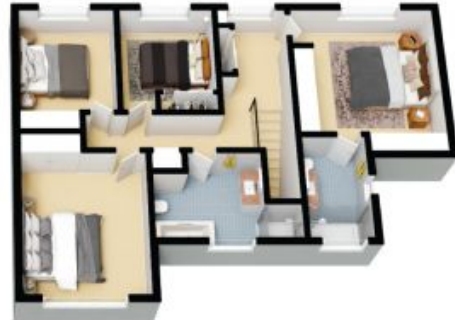


The site plan and floor plan are not to scale; measurements are indicative and in metres. Bushes and trees are placed for illustration purposes. Plans should not be relied on. Interested parties should make and rely on their own enquiries. All other information provided has been collected from reliable sources but cannot be guaranteed for accuracy.

23 Bangaroo St
North Balgowlah



Ground Floor



First Floor

Internal Living: 245 sqm
External Living: 77 sqm
Total Living Area: 322 sqm



The floor plan is not to scale; measurements are indicative and in metres. All features included in this 3D plan are for inspiration purposes only. This is not an exact replica of the property or the position of exterior elements. Plans should not be relied on. Interested parties should make and rely on their own enquiries.