



502/32 Chamberlain Street Campbelltown, NSW 2 2 1

Modern Top Floor 2 Bedroom North Facing Apartment

Welcome to your dream home! This modern, top floor 2 bedroom apartment is perfectly situated in a sought-after location, offering a convenient and comfortable lifestyle. Boasting a north-facing orientation, this property enjoys an abundance of natural light and stunning views. With its proximity to schools, walking distance to the station and CBD, this apartment is an ideal choice for both investors and owner-occupiers.

Price: \$489,950
Council Rates: \$284.20 p/q



Russell Wyer
 0414 867 707



Russell Wyer
 0414 867 707

502/32 Chamberlain Street
Campbelltown

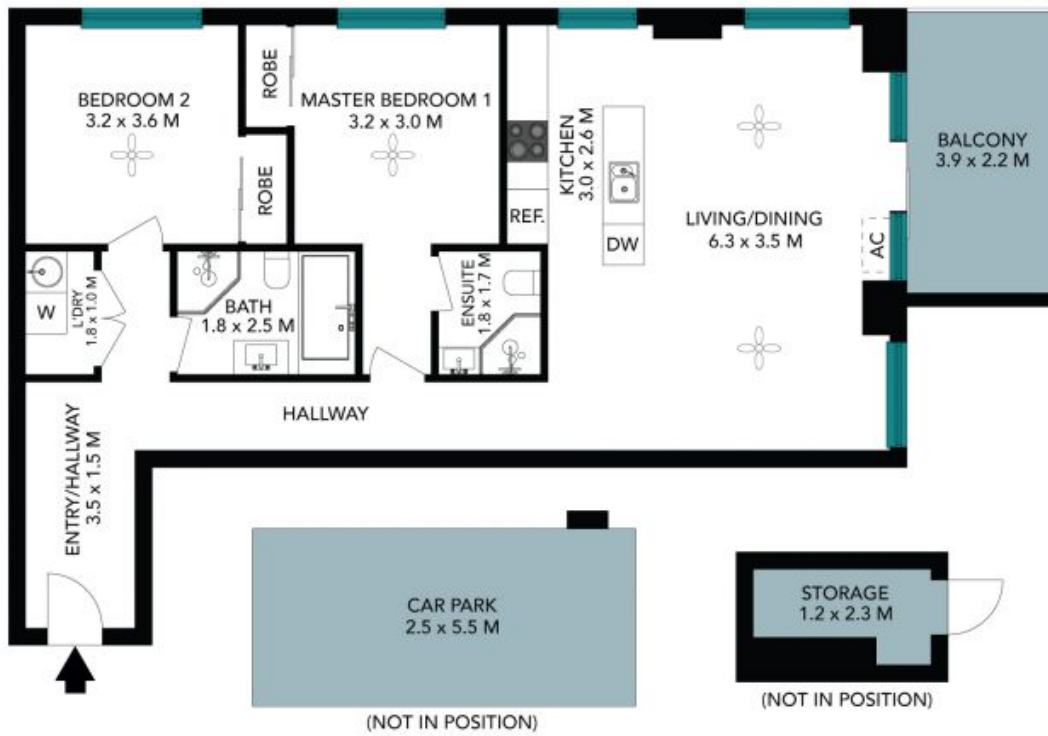
STONE



The floor plan is not to scale; measurements are indicative and in metres. All features included in this 3D plan are for inspiration purposes only. This is not an exact replica of the property or the position of exterior elements. Plans should not be relied on. Interested parties should make and rely on their own enquiries.

502/32 Chamberlain Street
Campbelltown

STONE



The floor plan is not to scale. Measurements are indicative and in metres. Exterior elements are not in position. Plans should not be relied on. Interested parties should make and rely on their own enquiries. All other information provided has been collected from reliable sources but cannot be guaranteed for accuracy.