



14/51 Pittwater Road Manly, NSW

1 1 1

Contemporary courtyard apartment by the beach

Peacefully sheltered to the rear of the immaculate 'Manly Mews' security building with near level access, this impressive garden apartment provides an idyllic lifestyle sanctuary for executive entertainers' or downsizers. Wonderfully bright and spacious, comfortably modern and boasting an enormous entertainers' courtyard screened by tropical gardens, it is only 250m from the rolling waves at Manly Beach and a few minutes stroll to Manly's buzzing village social and eatery scene.

Price:

Contact Agent



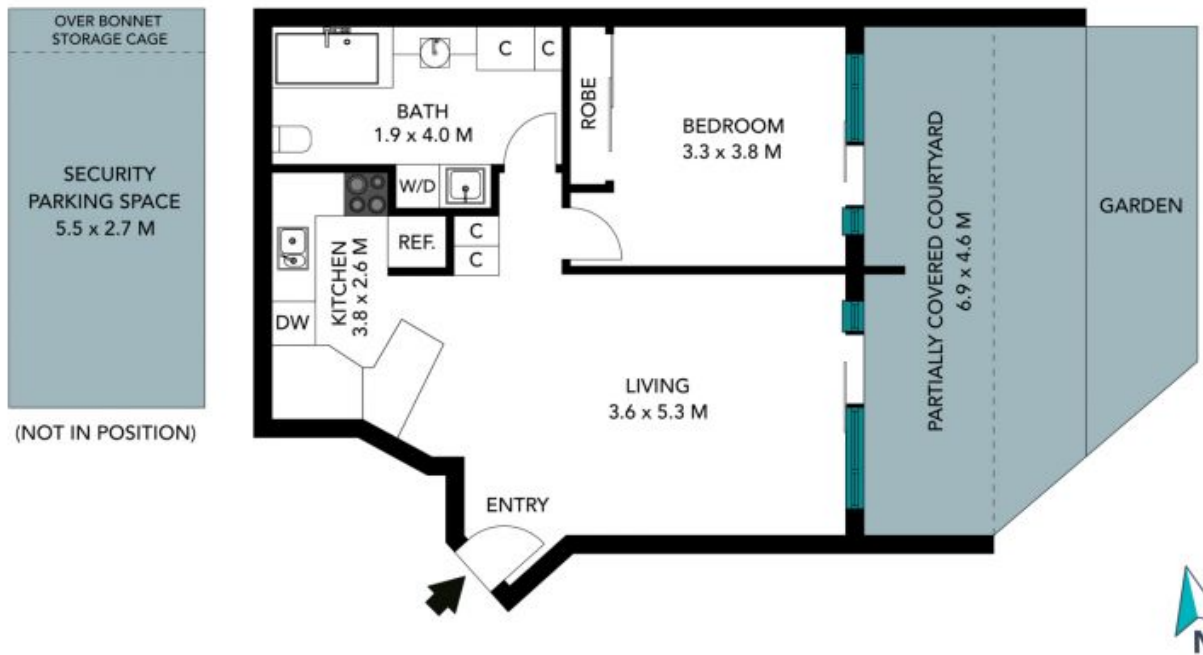
Michael Egan

0499 172 009



Eddy Piddington

0414 333 907



The floor plan is not to scale, measurements are indicative and in metres. Exterior elements are not in position. Plans should not be relied on, interested parties should make and rely on their own enquiries. All other information provided has been collected from reliable sources but cannot be guaranteed for accuracy.

14/51 Pittwater Road
Manly



The floor plan is not to scale; measurements are indicative and in metres. All features included in this 3D plan are for inspiration purposes only. This is not an exact replica of the property or the position of exterior elements. Plans should not be relied on. Interested parties should make and rely on their own enquiries.