

1 Christina Street Rydalmere, NSW 3 1 1

Duplex Potential (STCA)

Sitting on a 660sqm corner block with duplex potential, this beautifully maintained 3 bedroom home offers generous living areas and a great entertaining deck. Boasting a modern kitchen, large open plan living & dining area, and huge bedrooms, this is the perfect family home. Located in a family friendly neighbourhood, walking distance from schools, shops, cafes, parks and the Ponds Creek walking track at the end of the street.

Price: \$1,588,000



Aaron Lih
0420 825 598



Mark Atkinson
0420 744 406

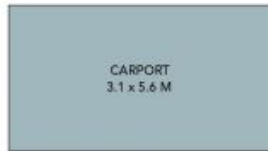
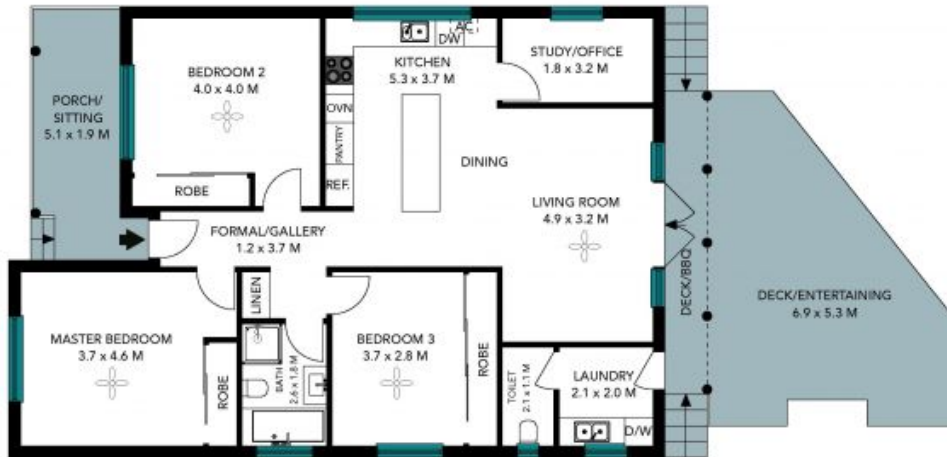
1 Christina Street
Rydalmere

STONE

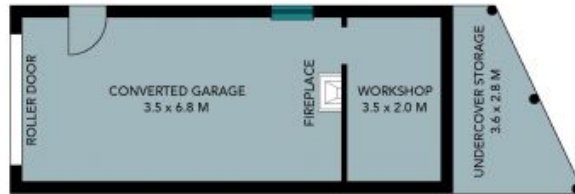


The floor plan is not to scale; measurements are indicative and in metres. All features included in this 3D plan are for inspiration purposes only. This is not an exact replica of the property or the position of exterior elements. Plans should not be relied on. Interested parties should make and rely on their own enquiries.

1 Christina Street
Rydalmere



(NOT IN POSITION)



(NOT IN POSITION)



The floor plan is not to scale, measurements are indicative and in metres. Exterior elements are not in position. Plans should not be relied on, interested parties should make and rely on their own enquiries. All other information provided has been collected from reliable sources but cannot be guaranteed for accuracy.