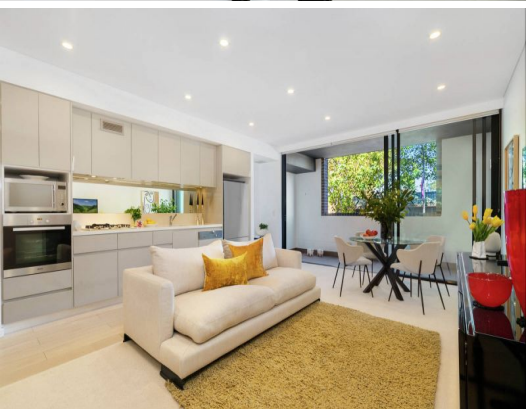


STONE



109/710 Military Road Mosman, NSW

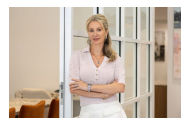


Executive Residence in the heart of Mosman village

Expressions of interest closes 5pm Tuesday 30th May

Price:

UNDER OFFER



Marize Bellomo

0414 972 203



The site plan and floor plan are not to scale; measurements are indicative and in metres. Bushes and trees are placed for illustration purposes. Plans should not be relied on. Interested parties should make and rely on their own enquiries. All other information provided has been collected from reliable sources but cannot be guaranteed for accuracy.