

313/989-1015 Pacific Highway Roseville, NSW



Unparalleled luxury only 550m to Roseville Station

Price: \$1,065,000.00

Council Rates: \$353.00 p/q

Water Rates: \$165.00 p/q

Strata Rates: \$1,188.35 p/q



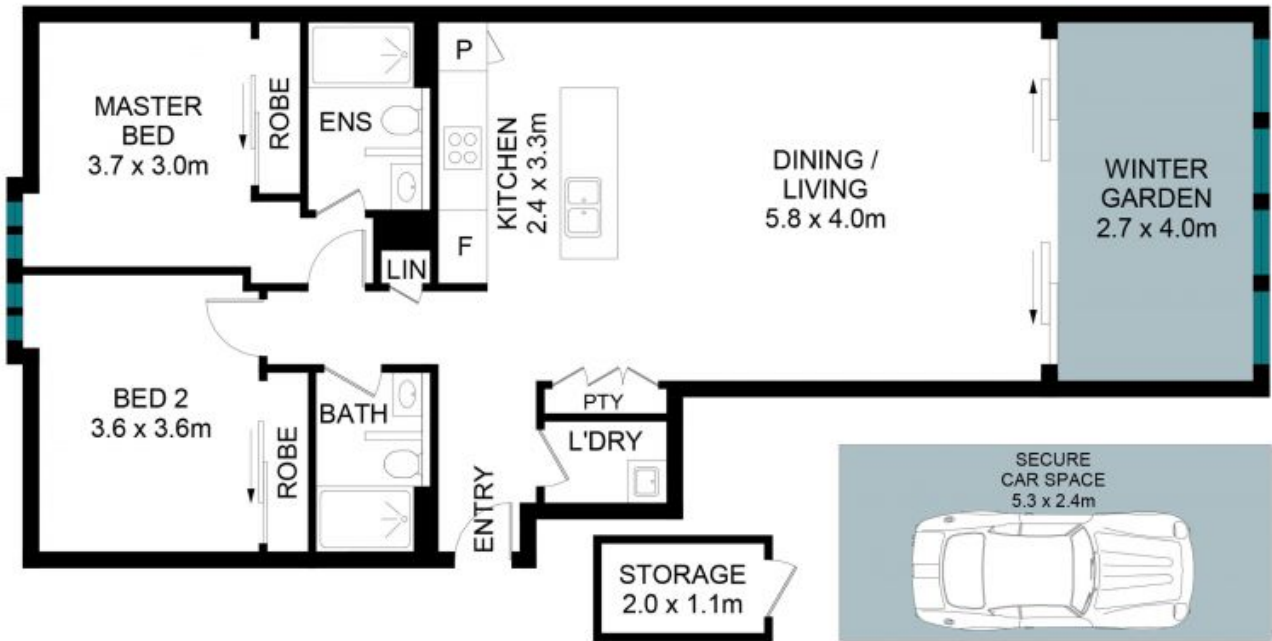
Jessica Zhou

0412 733 135



Chloe Mawass

0431 983 240



The floor plan is not to scale; measurements are indicative and in metres. Exterior elements are not in position. Plans should not be relied on. Interested parties should make and rely on their own enquiries.

313/989-1015 Pacific Highway, Roseville



STONE