



513V/68- 70 Vista Street Mosman, NSW



Mosman village living at its finest

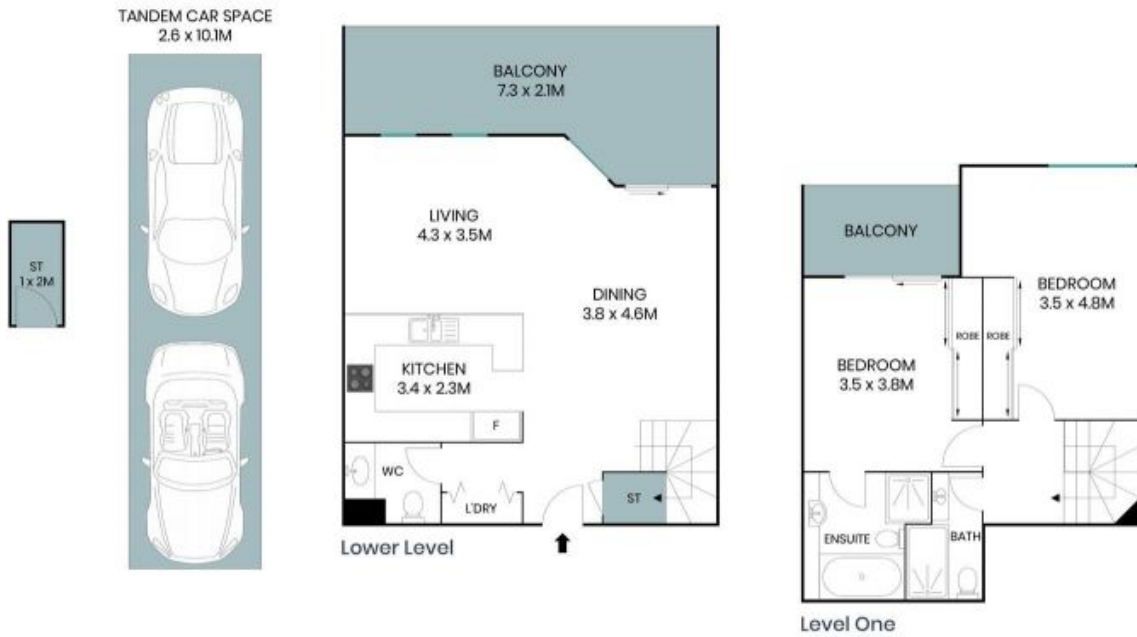
Immersed in leafy district and water views reaching across to Middle Harbour and beyond, this dual level residence promises the ultimate executive lifestyle in the heart of Mosman Village. It's perfectly positioned to capture bright sunshine from a north easterly aspect and is conveniently located just footsteps from local shops, boutiques and buses with a selection of cafes.

Price: \$1000 pw
Bond: \$4,000
Available Date: 16/06/2023



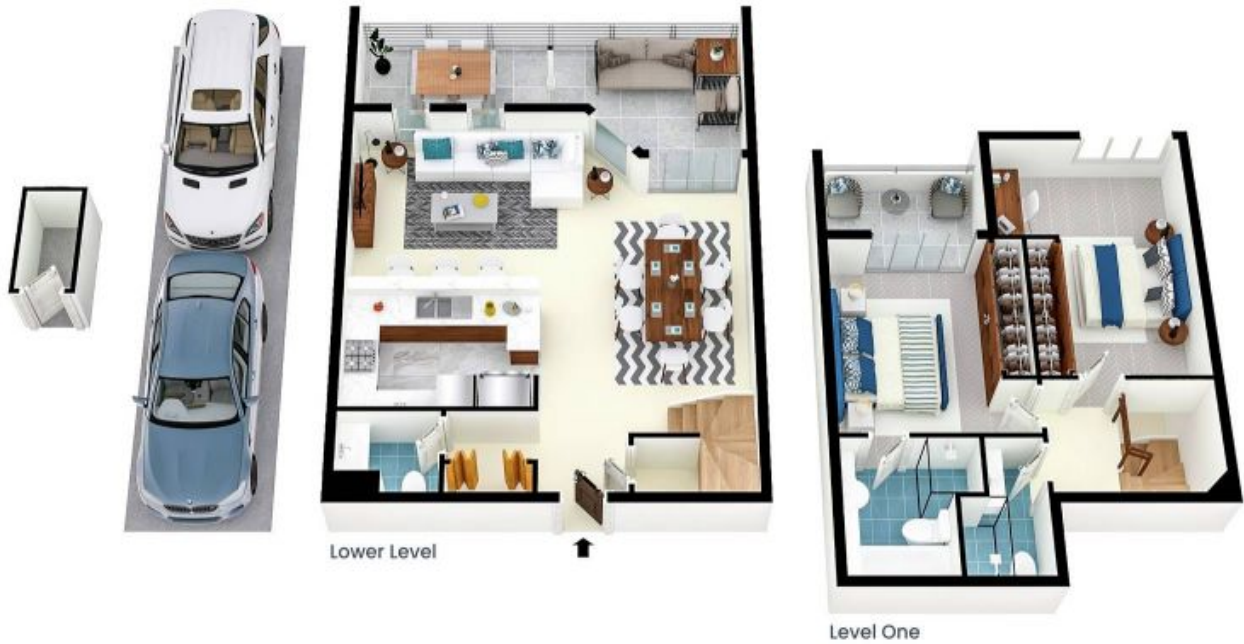
Christine O'Connell

0456 931 002



The site plan and floor plan are not to scale; measurements are indicative and in metres. Bushes and trees are placed for illustration purposes. Plans should not be relied on. Interested parties should make and rely on their own enquiries. All other information provided has been collected from reliable sources but cannot be guaranteed for accuracy.

513/70 Vista Street
Mosman



The floor plan is not to scale; measurements are indicative and in metres. All features included in this 3D plan are for inspiration purposes only. This is not an exact replica of the property or the position of exterior elements. Plans should not be relied on. Interested parties should make and rely on their own enquiries.