

1185 Old Princes Highway Engadine, NSW



Charming family home promises convenient lifestyle

Capturing splendid views stretching from Heathcote National Park to the Blue Mountains, this charming home ensures incredible lifestyle convenience in a prime location. It's an unmissable opportunity for families seeking an affordable property that promises comfort and privacy. Set on 575.4sqm parcel, the home is only metres from Cooper Street Reserve and a walk to shops, cafes, restaurants, buses and Engadine Station.

Price: Contact agent
Council Rates: \$392.00 p/q
Water Rates: \$157.00 p/q



Rhys Christofa

0415 684 877



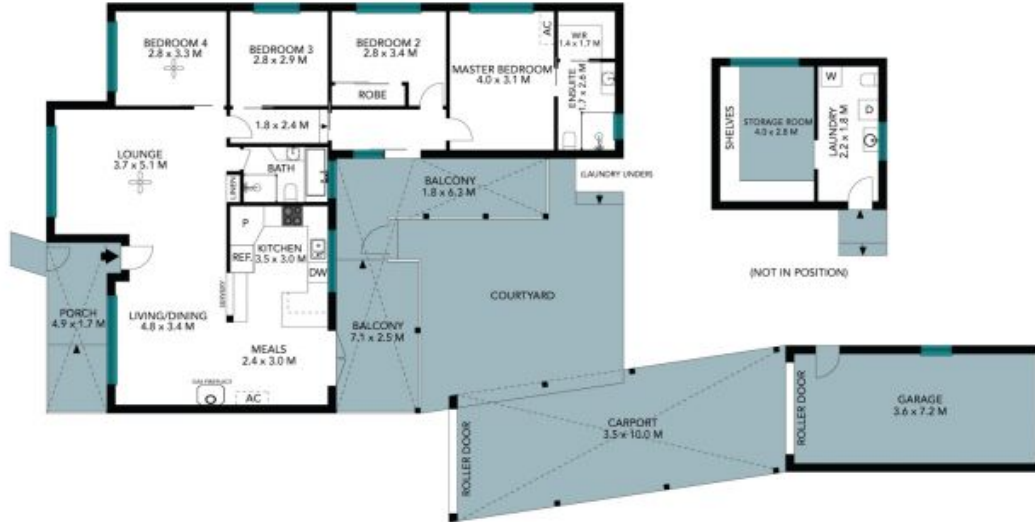
Ezra Malolo

0401 490 024

1185 Old Princes Highway
Engadine



Site Plan



The site plan and floor plan are not to scale; measurements are indicative and in metres. Bushes and trees are placed for illustration purposes. Plans should not be relied on. Interested parties should make and rely on their own enquiries. All other information provided has been collected from reliable sources but cannot be guaranteed for accuracy.

1185 Old Princes Highway
Engadine



The floor plan is not to scale; measurements are indicative and in metres. All features included in this 3D plan are for inspiration purposes only. This is not an exact replica of the property or the position of exterior elements. Plans should not be relied on. Interested parties should make and rely on their own enquiries.