



305/5 Havilah Lane Lindfield, NSW



Convenience and district views in the heart of Lindfield

Nestled on the third floor in the 'Lindfield Village' development this two-bedroom apartment offers seamless flow and an abundance of natural light. With dual covered balconies at each end, this apartment truly embraces its surroundings.

Price: Contact Agent

Strata Rates: \$1,547.70 p/q



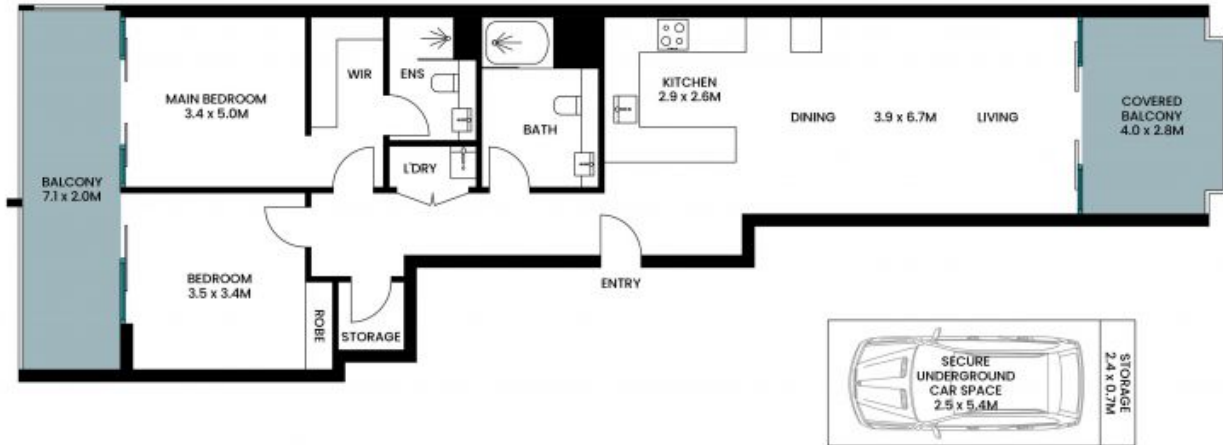
Adette Cao

0433 412 196



Patrick Haddad

0466 621 421



Internal area: 93m²
Covered external areas: 24m²
Car space & storage areas: 15m²
Total area: 132m²

The site plan and floor plan are not to scale; measurements are indicative and in metres. Bushes and trees are placed for illustration purposes. Plans should not be relied on. Interested parties should make and rely on their own enquiries. All other information provided has been collected from reliable sources but cannot be guaranteed for accuracy.