



11 Grandiflora Street Rouse Hill, NSW

4 2 2

Stylish Eden Brae in Prime Position, Minutes to Metro!

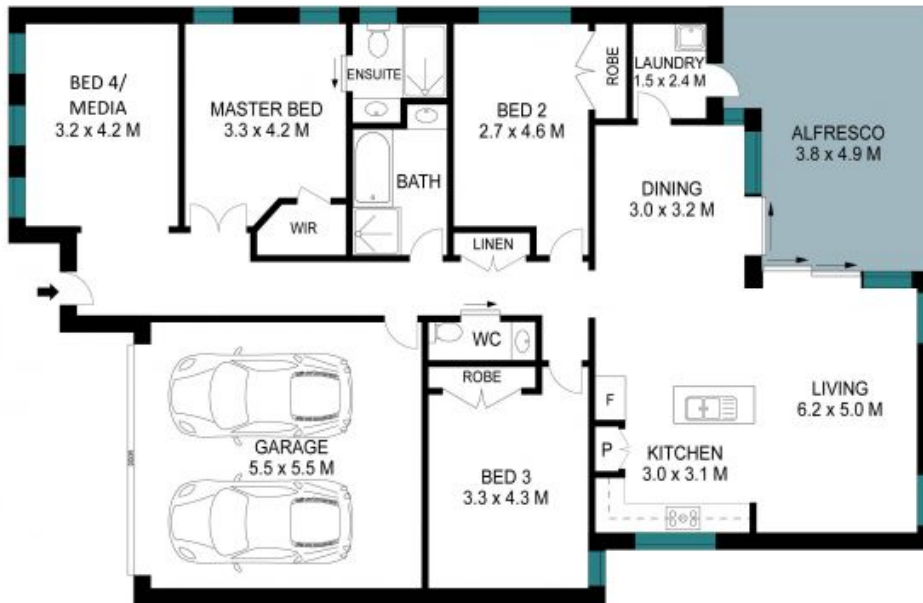
Quietly positioned in one of the areas most sought after streets. This Immaculately styled single level family residence features a versatile floor plan and deluxe modern finishes amid freshly manicured gardens. It provides a comfortable and convenient lifestyle near some of the best facilities Rouse hill has on offer.

Price: 1,550,000



Adam Buchert

0488 717 184



WARNING: DISCLAIMER This information is not to be relied upon. It is strictly used for marketing and illustration purposes only. All measurements are approximate. Not to scale. No liability accepted. You must rely on your own inquiries and seek advice from your solicitor.