



1 Maitland Street Abermain, NSW 3 2 3

Solid, retro and full of potential

There's plenty to ignite the imagination in this original home, set on a corner parcel and only 300m from the local shops. Flaunting a Federation facade and presented in largely original condition, its interiors are a haven of retro style and hold unlimited future potential for those ready to roll up their sleeves and give this beauty the transformation it deserves.

Price:

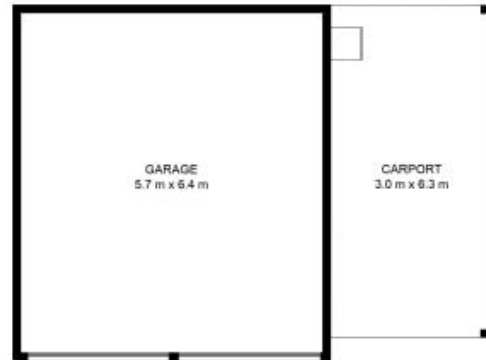
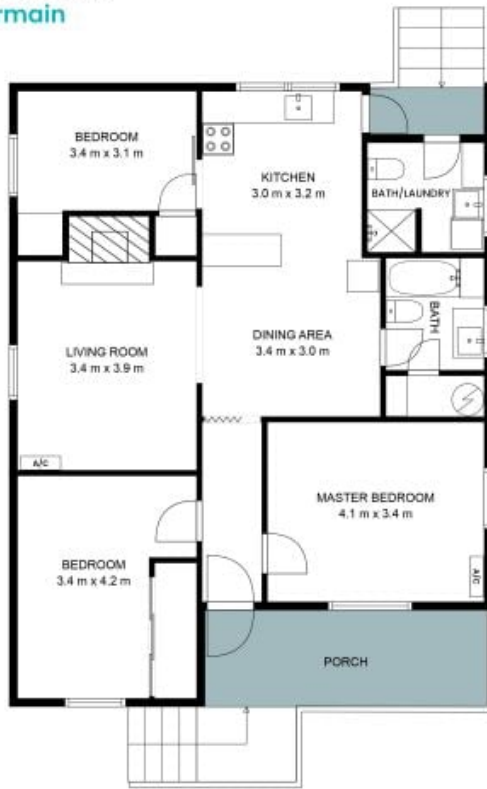
Contact Agent



Debra Ford

0413 478 655

1 Maitland Street
Abermain



The site plan and floor plan are not to scale; measurements are indicative and in metres. Bushes and trees are placed for illustration purposes. Plans should not be relied on. Interested parties should make and rely on their own enquiries. All other information provided has been collected from reliable sources but cannot be guaranteed for accuracy.



1 Maitland Street
Abermain



The site plan and floor plan are not to scale; measurements are indicative and in metres. Bushes and trees are placed for illustration purposes. Plans should not be relied on. Interested parties should make and rely on their own enquiries. All other information provided has been collected from reliable sources but cannot be guaranteed for accuracy.