



11 Thompson Street Bundeena, NSW

3

2

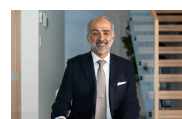
4

Pure potential with dual street frontage finds a prime beachside position 150m walk to beach

A highly sought-after seaside location, a large block of land and the vast untapped potential combine to make this unique property package an inspired choice for creative buyers who value blue-chip positioning. The ideal site to make a terrific new statement, it stands on a dual access allotment within 150m to Horderns Beach and you can hear the crashing waves from the front porch. This is a rare real estate offering that will bring fantastic rewards to those wishing to upgrade or knockdown/rebuild or develop the site and capitalise on such a tightly held Bundeena setting.

- A wide and level 815sqm, 15.24m x 53.6m block with rear access from Laurence Avenue
- Fresh and bright interiors feature separate lounge and dining areas
- Spacious backyard including a sunlit level lawn and covered patio
- A renovated kitchen featuring stone benchtops and a dishwasher
- Two bedrooms, two bathrooms plus a lock-up carport and extra parking

Price: SOLD | Rory Kalos
Council Rates: \$417.00 p/q
Water Rates: \$160.00 p/q

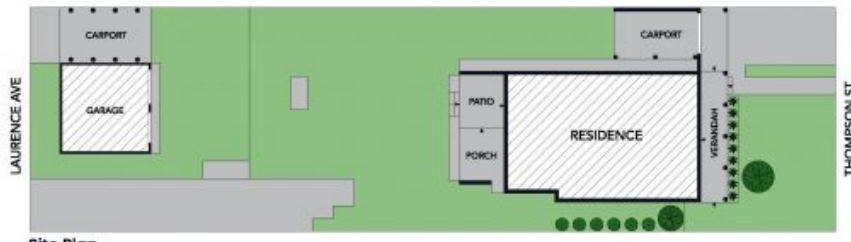


Rory Kalos
0413 177 711

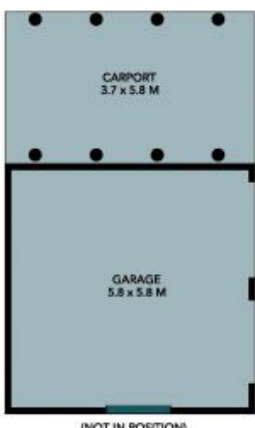


Stephanie Kalos
0403 468 216

11 Thompson Street
Bundeena



Site Plan



(NOT IN POSITION)



The site plan and floor plan are not to scale; measurements are indicative and in metres. Bushes and trees are placed for illustration purposes. Plans should not be relied on. Interested parties should make and rely on their own enquiries. All other information provided has been collected from reliable sources but cannot be guaranteed for accuracy.

11 Thompson Street
Bundeena



The floor plan is not to scale; measurements are indicative and in metres. All features included in this 3D plan are for inspiration purposes only. This is not an exact replica of the property or the position of exterior elements. Plans should not be relied on. Interested parties should make and rely on their own enquiries.