



154 Murray Farm Road Beecroft, NSW

6

3

5

Single Level Double brick Californian bungalow on 1,129 sqm

A private period sanctuary, this light filled 1920s residence boasts all the benefits of two homes in one, with a flexible, interconnected layout. Behind the home's long leafy driveway and formal garden facade, large living and entertaining dimensions exist through six grand bedrooms in addition to a home office, two full kitchens, and a generous low-care yard. All neatly bound in a time-honoured home and highly desirable setting - approx 1km approx. walk to St Gerard's Primary, Roselea Public and Carlingford High.

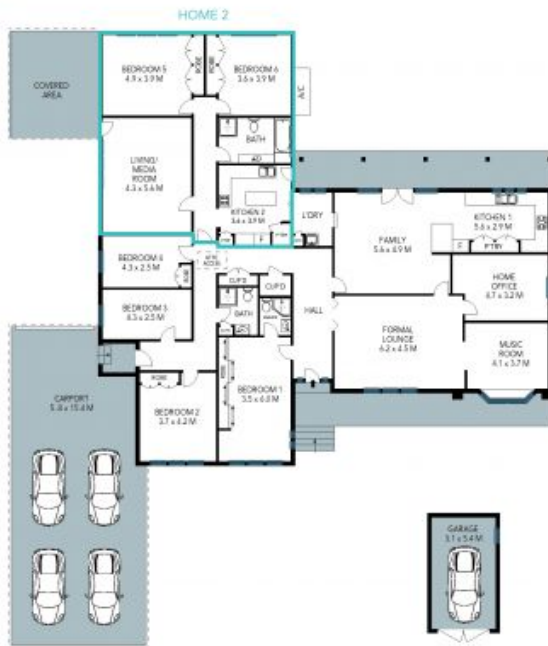
Price: Auction
Council Rates: \$502.00 p/q
Water Rates: \$159.00 p/q



Kevin Dearlove

0403 338 302

154 Murray Farm Road
Beecroft



Land Size: 1129 sqm
Internal Size: 295 sqm

The site plan and floor plan are not to scale; measurements are indicative and in metres. Bushes and trees are placed for illustration purposes. Plans should not be relied on. Interested parties should make and rely on their own enquiries. All other information provided has been collected from reliable sources but cannot be guaranteed for accuracy.