

2 Gillard Place Berkeley, NSW



SOLD BY STONE REAL ESTATE | MICHAEL SCHLEGEL & RAFFAELE DI CANDIA

Price: \$690,000

Prime cul-de-sac setting with lake, mountain views



Michael Schlegel

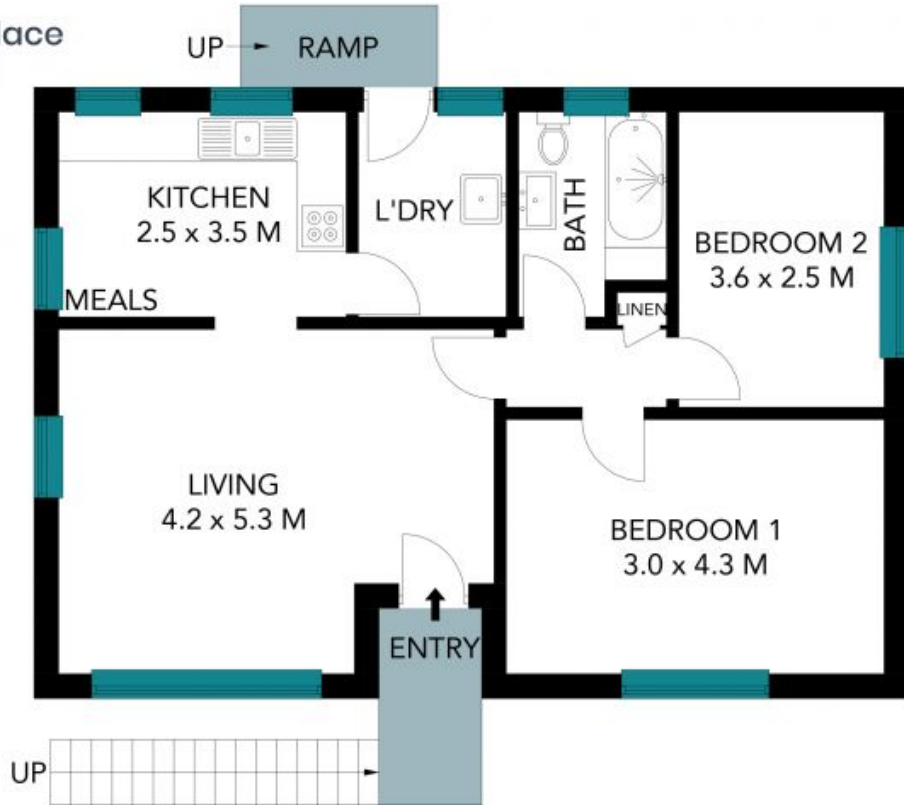
0418 627 220



Raffaele Di Candia

0451 552 861

2 Gillard Place
Berkeley



STONE



The site plan and floor plan are not to scale; measurements are indicative and in metres. Bushes and trees are placed for illustration purposes. Plans should not be relied on. Interested parties should make and rely on their own enquiries. All other information provided has been collected from reliable sources but cannot be guaranteed for accuracy.