

23 Wattle Street Killara, NSW

3 2 2

Incredible location, 1536sqm, immeasurable potential

Impeccably maintained and exceptionally rare and offering a truly remarkable prospect. Nestled within a highly sought-after and prestigious location, this captivating character home is situated on a flat, north-facing land of approx. 1536sqm, boasting an expansive 21m frontage. With its proximity to the railway, park, shops, and Killara High School, this property presents an unparalleled opportunity to envision and realize the creation of a dream home, complete with desirable additional features (STCA).

Price: Contact Agent



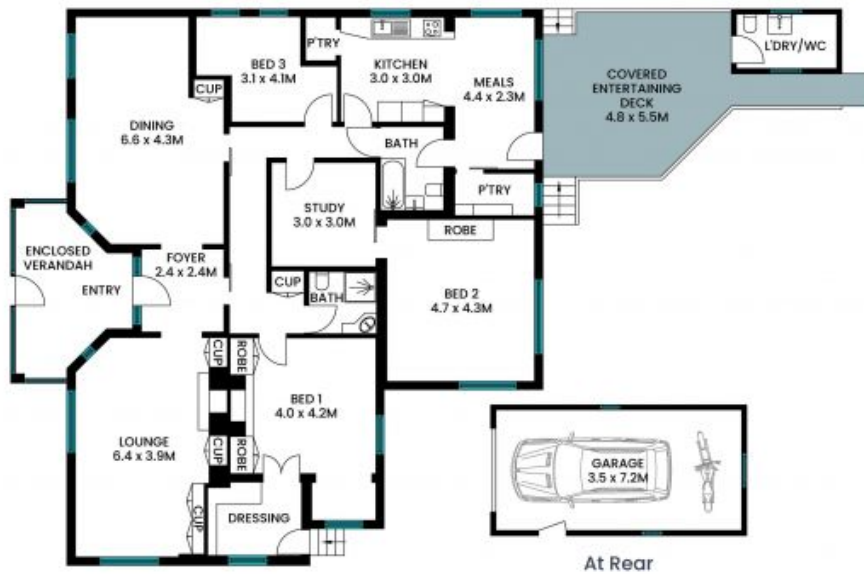
Ryan Woo
0410 884 680



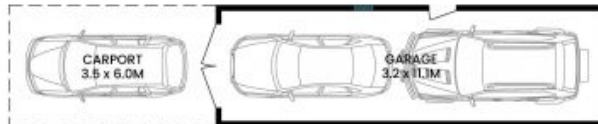
Matt Payne
0435 825 242

23 Wattle Street
Killara

STONE



Floor Plan



At Rear



Site Plan

Internal area: 198m²
Deck area: 27m²
Garage area: 61m²
Total area: 286m²

The site plan and floor plan are not to scale; measurements are indicative and in metres. Bushes and trees are placed for illustration purposes. Plans should not be relied on. Interested parties should make and rely on their own enquiries. All other information provided has been collected from reliable sources but cannot be guaranteed for accuracy.