



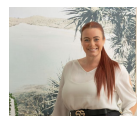
809 The Entrance Road Wamberal, NSW 3 1 2

### Modern family home

Ideally located in Wamberal just moments to shops and the beach is this modern family home. Offering a spacious and sunny north facing back yard and entertaining space with lots of room for the kids to run.

**Price:** \$725 p/week

**Available Date:** 16/06/2023



**Lee Summers**

0491 213 757



The Entrance Road



Internal 114sqm  
 External 657sqm  
 Land area 784sqm

Scale in metres. Indicative only. All information contained herein is obtained from sources we believe to be accurate. We cannot guarantee its accuracy. Interested persons should make and rely on their own enquiries