



115/23 Corunna Road Stanmore, NSW



Comfortable apartment living in central location

Situated in a conveniently central location, with Stanmore Station, local tram sheds, and Newtown shopping all just down the road, this delightfully modern apartment is spacious, comfortable, and an all-around winner.

Price: Deposit Taken

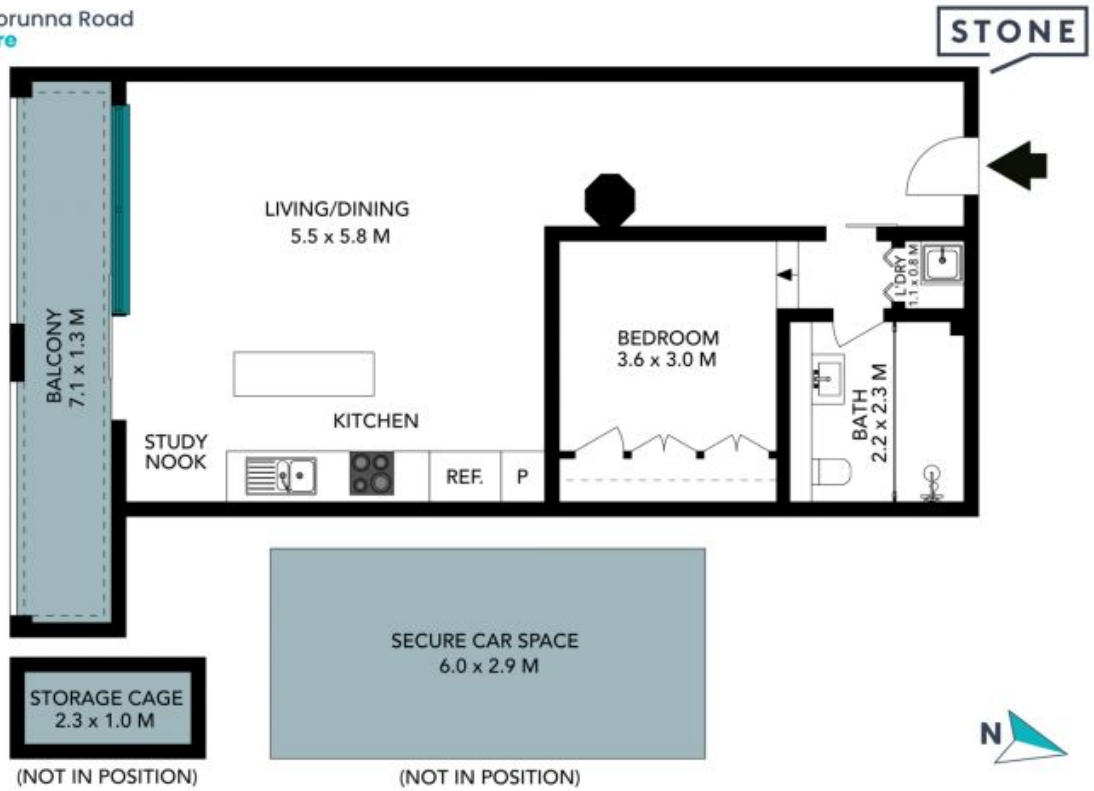
Available Date: 17/06/2023



Enrico Catania

0450 072 832

115/23 Corunna Road
Stanmore



The floor plan is not to scale, measurements are indicative and in metres. Exterior elements are not in position. Plans should not be relied on, interested parties should make and rely on their own enquiries. All other information provided has been collected from reliable sources but cannot be guaranteed for accuracy.