



28 Brentwood Avenue Figtree, NSW



SOLD BY STONE REAL ESTATE | SARAH WARD & JAMIE PEREIRA

Immense Potential

Price:

\$927,500



Sarah Ward

0400 439 602



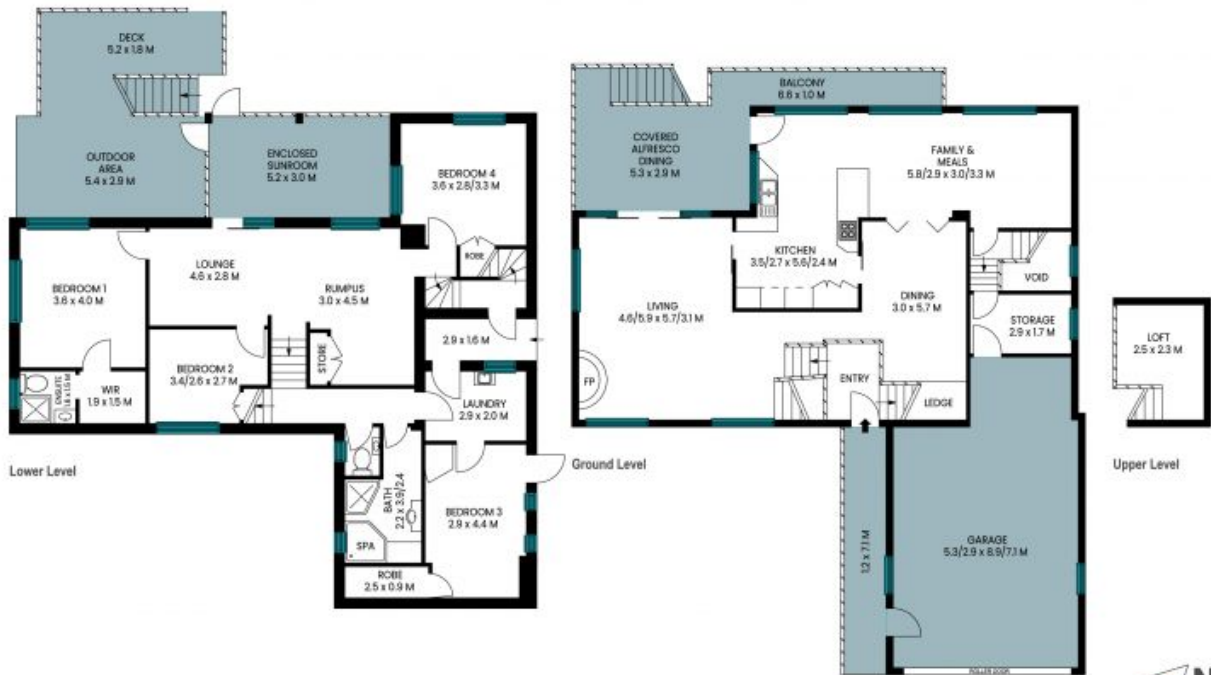
Jamie Pereira

0447 379 080

28 Brentwood Avenue, Figtree



INT : 222m²
EXT : 75m²
GARAGE : 42m²



The site plan and floor plan are not to scale, measurements are indicative and in metres. Bushes and trees are placed for illustration purposes. Plans should not be relied on. Interested parties should make and rely on their own enquiries. All other information provided has been collected from reliable sources but cannot be guaranteed for accuracy.

