



103/710 Military Road Mosman, NSW

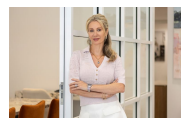


North facing residence in the heart of Mosman village

This extremely generous residence is quietly positioned at the rear of the block with the perfect north facing aspect. Beautifully appointed throughout and offers wonderful storage options and a fabulous entertaining terrace.

Price:

Price guide \$1,300,000



Marize Bellomo

0414 972 203



103/710 Military Road, Mosman

Site layout and floor plan are general only and should not be relied upon for construction purposes. All dimensions are approximate and subject to change without notice.

