



2/13 Belmont Avenue Wollstonecraft, NSW

2 1 1

SOLD PRIOR TO AUCTION - CALL DAVID HILL 0411 491 122

Spacious, sundrenched, two-bedroom apartment close to all amenities
Located on the ground floor of a well-maintained boutique block of 15 units is this immaculately presented two-bedroom apartment. The whisper-quiet location and the sunny aspect combine to make this apartment a haven of easy living with a light and airy ambience.

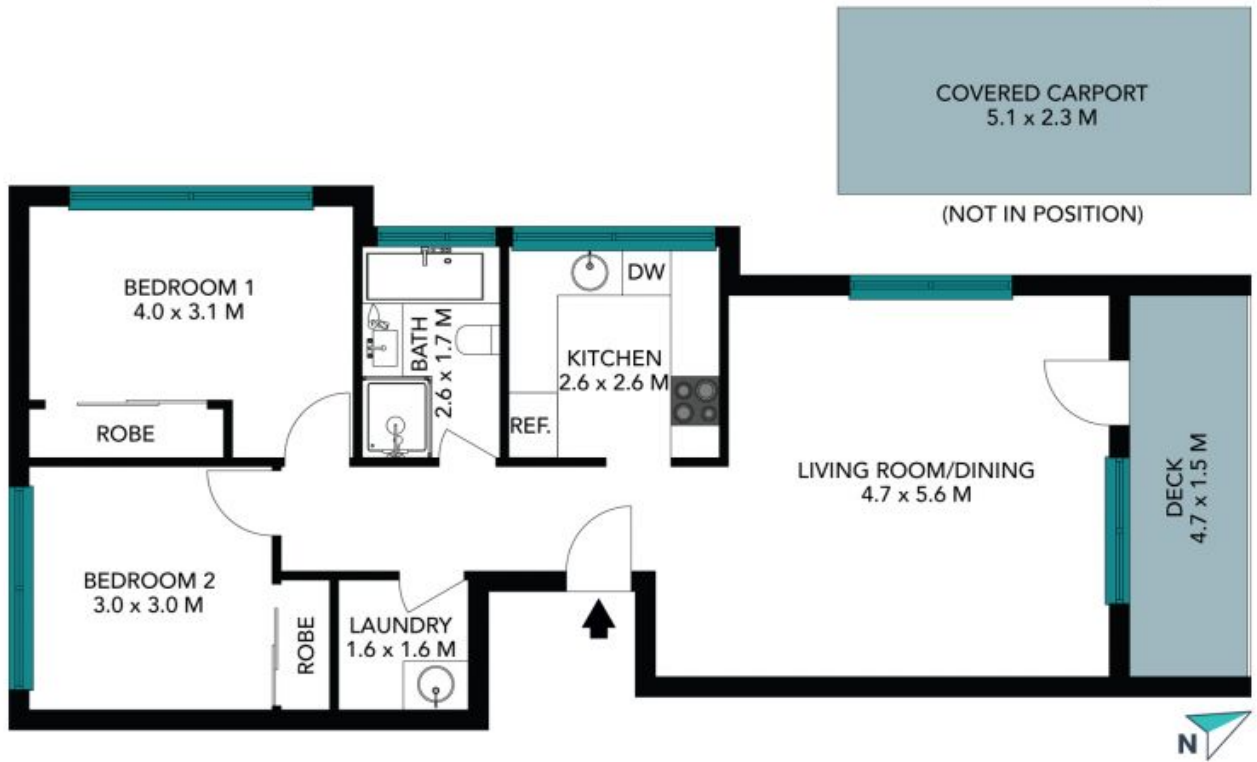
Price: SOLD PRIOR TO AUCTION
Council Rates: \$298.00 p/q
Water Rates: \$156.00 p/q
Strata Rates: \$855.00 p/q



David Hill
0411 491 122



Ruby Johnson
0432 869 227



The floor plan is not to scale, measurements are indicative and in metres. Labels elements are not in position. Plans should not be relied on. Interested parties should make and rely on their own enquiries. All other information provided has been collected from reliable sources but cannot be guaranteed for accuracy.

2/13 Belmont Avenue
Wollstonecraft

STONE



The floor plan is not to scale; measurements are indicative and in metres. All features included in this 3D plan are for inspiration purposes only. This is not an exact replica of the property or the position of exterior elements. Plans should not be relied on. Interested parties should make and rely on their own enquiries.