

B21/31-37 Pacific Parade Dee Why, NSW



Ultra chic apartment in key location

Modern and spacious, this impressive security apartment features everything from an exceptionally spacious layout to superb appointments, making it an ideal first home, downsizer or investment. Located in the immaculate 'Meridian Pacific' with lift access, it is literally footsteps to Dee Why's buzzing town centre and a 10 minute stroll to Dee Why Beach.

Price: \$640,000



Tim Mumford

0421 942 693

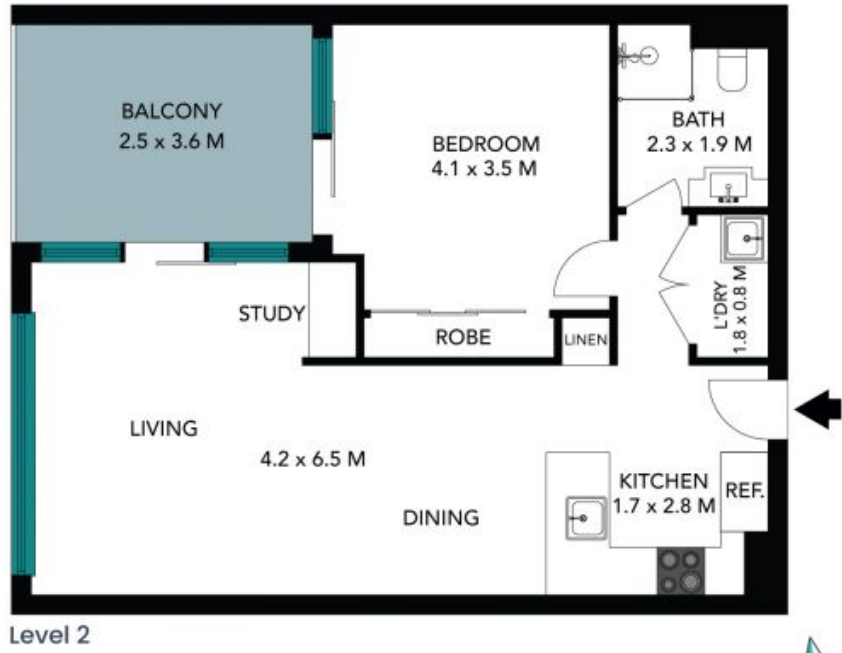


Catherine Wilson

0421 966 570

B21/31-37 Pacific Parade
Dee Why

STONE



The floor plan is not to scale, measurements are indicative and in metres. Certain elements are not in position. Plans should not be relied on. Interested parties should make and rely on their own enquiries. All other information provided has been collected from reliable sources but cannot be guaranteed for accuracy.

B21/31-37 Pacific Parade
Dee Why



Basement Level



Level 2



The floor plan is not to scale; measurements are indicative and in metres. All features included in this 3D plan are for inspiration purposes only. This is not an exact replica of the property or the position of exterior elements. Plans should not be relied on. Interested parties should make and rely on their own enquiries.