

12 Parkview Grove Mount Ousley, NSW

4 2 1

Tranquil leafy location

Placed amidst beautiful surrounds with the blissful positioning in the foothills of Illawarra Escarpment, this residence is designed for functionality to accommodate the growing family or fastidious tenant. Offering grand house like proportions with multiple living areas, sparkling in ground pool and surrounded buy quality homes in this sought after neighbourhood. It also provides good easy access to Wollongong, Fairy Meadow and shopping precinct as well as Balgownie village nearby.

Price: \$880 per week

Bond: \$3,520

Available Date: 27/06/2023



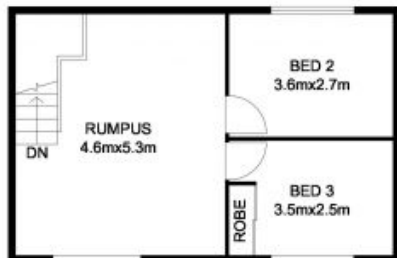
Jake McKinnon

0430 604 402

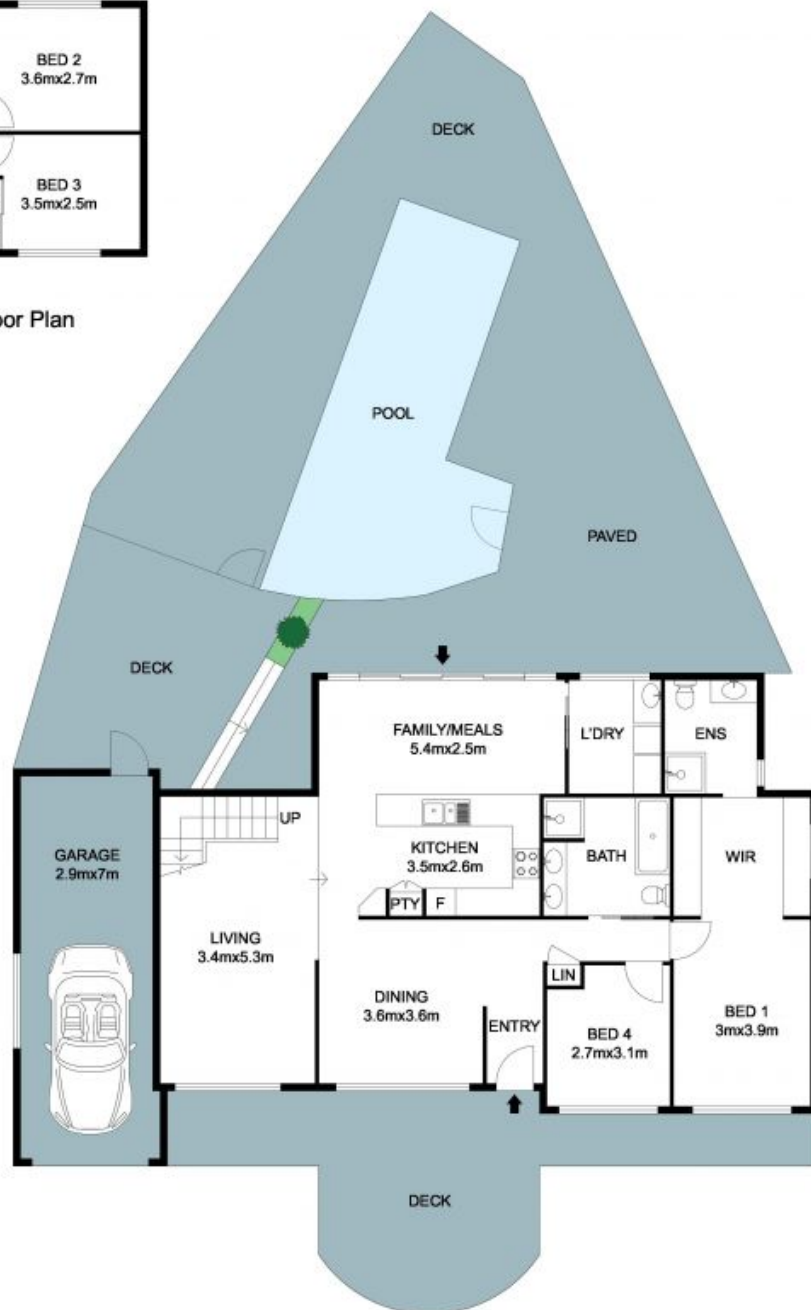


Leasing Agent Illawarra

0421 396 635



Upper Level Floor Plan



Ground Level Floor Plan

The Floor plan is not to scale; measurements are indicative and in metres.
 Plans should not be relied on. Interested parties should make and rely on their own enquiries.
 All other information provided has been collected from reliable sources but cannot be guaranteed for accuracy.